

WEATHER

	Min.	Max.	Precip.
Wednesday, Jan. 7	-3	29	0.03
Thursday, Jan. 8	-13	31	1.2 sn
Friday, Jan. 9	-2	17	Trace
Saturday, Jan. 10	-2	11	Trace
Sunday, Jan. 11	1	16	1.3 sn
Monday, Jan. 12	-22	34	0.02
Tuesday, Jan. 13	-20	27	6.0 sn

ONE HUNDRED-SIXTH YEAR—No. 31

12 Pages This Week

Plus 4-Page Supplement

CHELSEA, MICHIGAN, THURSDAY, JANUARY 15, 1976

15c per copy

SUBSCRIPTION: \$6.00 PER YEAR

The Chelsea Standard

QUOTE

"Books are the legacy that a great genius leaves to mankind."
—Joseph Addison.

Mothers March For March of Dimes Starts Saturday

Chelsea's Mother's March for the 1976 March of Dimes campaign will kick-off tonight, Thursday, Jan. 15 at 7:30 p.m. with a coffee hour at St. Paul United Church of Christ.

Gail Weston, chairman of the Washtenaw County Campaign, will speak to volunteers and interested guests.

The Mother's March, chaired by Mrs. Pat Whitesall, will be held in the Chelsea area from Saturday, Jan. 17 through Saturday, Jan. 24.

Other campaign chairmen are treasurer, Lynn Popovich; Gail Duhamel, chairman of the kick-off coffee; and Betty Hopkins, chairman of the canister and dime board distribution.

Heading up mothers who will be marching in the village are Kay Farley, Janet Rossi, Sherri Plank, Angie Smith, Brenda Larson, Lynn Popovich and Gail Duhamel.

Township captains are Kathy Frisinger for Lima township, and Jan Grenier for Lyndon. Sylvan and Dexter township captains have not been confirmed. "I've called as many as 23 persons to try and get captains for these townships," remarked Mrs. Whitesall and "I'm not getting any response." Women who would be interested in either of these positions should contact Mrs. Whitesall at 475-2538.

Guests are welcome to attend the kick-off tonight.

Open Gym Program Slated for Youngsters

In addition to offering courses to Chelsea youth this winter, the Recreation Council, under the direction of Bob Beaudoin will hold an open gym program Saturday afternoons for eight weeks at South school. The program, which will begin this Saturday, Jan. 17, will run from 1 to 3 p.m. Participants in the program must be between the ages of 6 and 15. Fees will be payable at each session at the cost of 25 cents per person.

Following is the weekly schedule of activities designed to keep Chelsea's younger set happy.

'Carnival' Cast Rehearsing for March Dates

Chelsea High school will perform the musical "Carnival," March 18, 19, 20 at 8 p.m. in the high school auditorium.

A carnival in American is usually thought of as a traveling amusement show filled with rides and displays in big tents. The carnival this musical is about is of European style, more of a circus type, filled with all of the "carnival people"; acrobats, jugglers, clowns, and vendors.

In "Carnival" you will meet these characters: Paul (Howard Salyer), a bitter puppeteer whose only way of expressing himself is through his puppets; Jacquot (Doug Beaumont) his partner and the only friend and person who understands him; Lili (Sue Leach), an innocent and unsuspecting girl who falls in love with the circus life; and Marco the Magnificent (Dennis Bauer), who with Rosalie (Kathy Treado), perform the magic.

It is a convention of the play that all set changes are executed by the six Roustabouts (Matt Diedrich, Dennis Petsch, Matt Merkel, Steve Pennington, John Daniels, and Rob Wenk).

The entire carnival is headed by B. F. Schlegle (Neil Cockerline) the ringmaster and owner.

Tickets for "Carnival" will go on sale early in March.



MILLY SMITH'S GANG: Mildred Smith, a resident of the Chelsea Methodist Home, walks daily to South school where she works with small groups of first graders helping them to improve their reading skills. Here, Mrs. Smith and some of her children

are ready to read dime store books she has re-written to fit their reading vocabularies. Pictured from left, Karen Weber, Mrs. Smith, Kelly Burke, Jimmy Rooke, David Ringe, Lori Jedele and Shelly Williams.

Cagers Chalk Up 6th Loss to Dexter, 76-64

Very, very poor foul shooting was the contributing factor to the Bulldogs' sixth SEC loss to Dexter last Friday evening, 76-64.

Coach Tom Balistrere reported that his team shot a meager 44 percent from the foul line, putting in only 14 of 32 shots.

Balistrere also said his team was out-rebounded, 51 to 37. However, despite the loss, the poor showing at the foul line and on the boards, the Bulldogs managed to stay at least within 10 points of the Dreadnaughts for the entire game.

After the first quarter of play the Dreadnaughts held on to a slim two-point lead. However, foul trouble with three Chelsea players, keeping them on the bench in the second quarter, allowed the Dreadnaughts to pull ahead for a substantial lead at the half. "We just couldn't overcome that 10-point lead," Balistrere said.

Randy Guenther, who remains the only Bulldog averaging in the double figures, put in 19 points for his team. Mike Tobin shot for (Continued on page three)

James Daniels Named To Head Road Commission

James K. Daniels of 595 Glazier Rd., was elected chairman of the Washtenaw County Board of Road Commissioners at the board's regular meeting of Jan. 6. Elected vice-chairman was Frederick J. Schwall of Ypsilanti. Former chairman, Don A. Weir of Manchester, was appointed member.

Daniels, who has served on the board since June of 1970, was elected vice-chairman in 1974.

Methodist Home Resident Finds Time To Help First Graders

Milly Smith is the kind of special person that you know there must be more of, but you simply haven't met them.

As she says herself, "A friend is a stranger you don't know." Sitting in her room at the Chelsea Methodist Home, where she has resided for four years now, one cannot help but notice the walls of cards, the door plastered with photographs, a bed covered with decorative pillows and boxes and boxes of children's books lining the walls of the cheery room.

No, Mrs. Smith does not read volumes and volumes of children's books to herself. In fact, they are not for her reading at all, but for the eyes and pleasure of the numbers of first graders she works with at South school—giving them the special attention and help that their teachers often do not have time for.

Since coming to Chelsea over four years ago, Mrs. Smith, a retired school teacher of 31 years, was not just one to sit and let the days pass. A meeting with Charles Cameron, followed by another with Sylvester Wojcik, principal of South school, intrigued them with her idea to volunteer in the schools at the first grade level. "That," she says, "is the most important. When most children need all the extra attention and help they can get."

Mrs. Smith, who bases her entire program on "making the children feel successful" has purchased hundreds of dime store readers, converting complicated stories full of words too difficult for the first grader to master into simple readers of different degrees of difficulty.

Learning then becomes more fun for Mrs. Smith's children as they strive to read in order to check out books from her library. Even over vacation, volumes from Mrs. Smith's leading library were found in the homes of many South school first graders who asked to take a book or two home for the holidays.

The children, who come to Mrs. Smith in groups of four or five, can watch their progress on special charts she has designed with stars that mark each progression. Each star denotes some small or large triumph for the child... a mark that says to them "you are okay, you are a success."

However, there is much more to Milly Smith than the fact that she spends three hours daily, rain or shine, sleet or snow, with the children at South school.

For this woman, who must rise at an early hour, dress and breakfast and allow herself enough time to walk from the Methodist Home to South school, which she says is "my daily exercise," is a way of life that encourages even the young to do more, to really live.

Far more than being a resident of the Chelsea Methodist Home, Mrs. Smith is a member of the community at large. She bowls with the Leisure Time league and has a small wooden bowling pin marking her top score of 170. When she came to Chelsea she asked if she could bowl as she had never done it before. The reply, "if you walked in (the Home) you can bowl." So bowl she does each week with her league. Even one of her grandchildren has made a small replica which sits atop her television of "Grandma bowling."

Wrestlers Pin Brighton for 44-13 Victory

Chelsea wrestlers rolled over Brighton with relative ease last week, defeating their brother Bulldogs by a whopping 44-13. Chelsea Bulldogs lost only three matches in the contest; displaying over-all improvement in all weight classes.

According to CHS wrestling coach, Richard Bareis, "Chelsea's lighter weights showed some scoring punch." At 98 pounds, John Bulick scored a second period pin and "looked strong." Bareis remarked, Chuck Young, at 105 pounds, pounded out an 18-1 superior decision while Joe Keiser at 112 pounds, ran into one of Brighton's better wrestlers and lost, 9-0.

Freshman Doug Wetzel, filling in at 119 pounds, came through with a fine 7-2 decision win. Jim Stahl, at 126 pounds, rolled up his 13th win with a lopsided 19-0 decision.

Mike Young, at 132 pounds, came from behind to score a third period pin. In the 145-pound match, Nick Keiser wrestled his way to a 7-2 decision win. Tim Reed received a forfeit at 155 pounds. At 167 pounds, Bruce Bennett scored a one-sided 12-1 decision. Dennis Bauer then scored a second period pin victory. At heavyweight, Tom Bareis lost a close 8-7 decision.

Coach Bareis said that the overall dual line is looking much stronger for the team, adding that he hopes for continued improvement.

Bareis also said, "our competition will be tougher starting tonight (Thursday) with the South Lyon team."

Matmen Find Tough Competition at Parma

Dennis Bauer was Chelsea High school's only champion at the Western Invitational Tournament held last Saturday at Parma Western. Bauer moved his record to 15-0 as he defeated a previously undefeated opponent from Eaton Rapids in the finals.

Finishing second for the Bulldogs were Dale Schoenberg at 119 pounds who knocked off an undefeated wrestler before losing a decision in the finals to Jackson High. Tim Reed finished second at 155 pounds, losing to a wrestler from Western.

Schoenberg's record now is a fine 16-1 while Tim's record, also impressive, is 17-1.

Chelsea's only other wrestler to place was Bruce Bennett who gained a fourth place and lost two close matches, 6-3 against the champion, and 2-1 in consolation finals. Bennett's record is now 12-8.

Coach Richard Bareis noted that Jim Stahl wrestled "real well" and just missed making the finals, losing 4-3 at the very end of his match in semi-final competition. "It was a tough tournament and it separated wrestlers quickly," Bareis remarked. He stated, "it showed Chelsea's wrestlers that they have quite a ways to go."

Wrestling Tournament Slated Here on Jan. 24

Chelsea will sponsor the 1976 Bulldog Wrestling Tournament Saturday, Jan. 24 at Chelsea High school. Participating in the tournament will be wrestlers from Albion, Belleville, Chelsea, Dundee, Howell, Lake Fenton, Tecumseh and Jackson Northwest.

Teams will weigh in at the CHS gymnasium between 8 and 9 a.m. Saturday. Wrestling will begin at 11 a.m. with the consolation finals at 6:30 p.m., followed by the finals.

According to Chelsea Bulldog coach, Richard Bareis, the champion will receive a medalion and neck ribbon. Second- and third-place wrestlers will receive a (Continued on page three)



FORTY-NINE DOLLARS worth of dimes and quarters fill this March of Dimes board displayed by Ed Greenleaf and his son, Gregory, at the Mark IV Lounge. Patrons of the lounge had filled the board as of last Thursday after it had been up for only three days. According to Mrs. Betty Hopkins who chairs the distribution of dime boards and canisters to benefit the 1976 March of Dimes, boards have also been placed in the Pub, the Wolverine Bar, and Silvers. Canisters may be found in approximately 50 places of business in the Chelsea area.

Intramural Basketball Starts at Beach School

Last Wednesday, 130 participants in the Beach Middle school intramural basketball program showed what four weeks of practice had done for their shooting, dribbling and guarding ability.

The 50 boys and 80 girls in the program directed by Pat Clarke, will play games on Wednesdays throughout the season.

In the boys division, with records of 1-0, are the teams of Thorn-

bury, McGill and Davis. Losing their first games were Omstead's team, Kolander's team, and Wilson's team.

The scores are as follows: McGill 32, Kolander 20; Thornbury 18, Omstead 8 and Davis 26, Wilson 19.

High scorer among the boys in this first round were Carl Simpson with 14 points, Walt Soltysik with 13, Howey Flintoft with 11 and Dan McGill with 11.

Divided into the Eastern and Western divisions, 80 girls battled it out on the courts last Wednesday.

Holding 1 and 0 records in the Western division are the teams of Wood, Push and Bort. First time losers were the teams of Botsford, Hume and Connell. Scoring was Wood 24, Connell 6; Push 28, Botsford 4; and Bort 12, Hume 8. Leading scorers in the division were Nannette Push in the high double figures with 20 points; a new girl's record. Kim Wood contributed 14 points for her team.

Taking victories in the Eastern division were the teams of Sabo and Randy.

(Continued on page three)



NEWLY-ELECTED OFFICERS of the Chelsea Area Historical Society, seated from left, are president, Marian Sprague; vice-president, Marie Petsch; secretary, Carla Schwarze; and treasurer, Alice Thornton. Standing from left, are directors Harold Jones, Anne Feeney and Wilfred Lane. The group held their first meeting of 1976 Monday evening at the Congregational church.

Historical Society Installs Officers

Installed at their annual meeting, Monday evening, Jan. 12, officers of the Chelsea Area Historical Society for 1976 are: president, Marian Sprague; vice-president, Marie Petsch; secretary, Carla Schwarze; and treasurer, Alice Thornton. New director for a three-year term is Ann Feeney. The two additional directors are: two-year term, Wilfred Lane, and one-year term, Harold Jones.

Annual reports were given by the secretary, treasurer, and committee chairman.

Hazel Dittmar was appointed Membership Committee chairman. The 1976 membership drive is currently in progress with the following classes of membership available: Active, Individual, Family, Junior, Senior Citizen, Associate, Patron and Life. Each member receives a membership card and the Society news bulletin.

Plans by the Society for the coming year include: a Chelsea Historical Homes Tour in May, the tape recording of oral history from Chelsea area residents, a photo-

graphic record and written history of many of Chelsea's fine older homes, and investigation into properties or buildings suitable as a working museum for the Society.

Chelsea Area Historical Society notepaper remains available at McKune Memorial Library.

Refreshments were served by Gwen Schrader and Ann Feeney. The group will meet again Feb. 9 at 8 p.m. at the First Congregational church. President Marian Sprague encourages all interested persons to attend.

Established 1871 **The Chelsea Standard** Telephone 475-1371

Excellence Award By Michigan Press Association
1951-1952-1960-1964-1965-1966

Walter P. Leonard, Editor and Publisher



Published every Thursday morning at 300 North Main Street, Chelsea, Mich. 48118, and second class postage paid at Chelsea, Mich., under the Act of March 3, 1879.

Subscription Rates (Payable in Advance)
In Michigan: One Year \$6.00, Six Months \$3.50, Single Copies \$.20
Outside Michigan: One Year \$8.50, Six Months \$5.00, Single Copies \$.25

MEMBER **NATIONAL NEWSPAPER ASSOCIATION**
National Advertising Representative: MICHIGAN NEWSPAPERS, INC., 257 Michigan Ave., East Lansing, Mich. 48823

Uncle Lew from Lima Says:

DEAR MISTER EDITOR:
About the time you get convinced that science is moving to fast for

Howell Livestock Auction

Starts 1 p.m. Every Monday
Mason 677-8941
The Wise Owl Says Ship to Howell
Phone 546-2470. **Jim Franklin**
Market Report for Jan. 12

CATTLE—

Bulk Gt.-Choice Steers, \$42 to \$44.
Fav. High Choice Steers, \$42 to \$45.
Gd.-Choice Heifers, \$38 to \$41.
Red-Holstein Steers, \$30 to \$38.
Ut.-Stk., \$28 and down.

COWS—

Heifer Cows, \$28 to \$30.
Ut.-Commercial, \$25 to \$28.
Canner-Cutter, \$17 to \$22.
Fat Red Cows, \$22 to \$25.

BULLS—

Heavy Bologna, \$28 to \$32.50.
Light and Common, \$26 and down.

FEEDERS—

400-600 lb. Good-Choice Steers, \$28 to \$35.
600-800 lb. Good-Choice Steers, \$32 to \$38.
300-500 lb. Good-Choice Heifers, \$20 to \$25.
300-500 lb. Holstein Steers, \$22 to \$25.
500-600 lb. Holstein Steers, \$24 to \$28.
Common and medium, \$20 and down.

CALVES—

Prime, \$60 to \$65.
Good-Choice, \$40 to \$60.
Heavy Deacons, \$35 to \$50.
Cull & Med., \$5 to \$10.
Calves going back to farms sold up to \$30.

SHEEP—

Shorn Slaughter Lambs:
Choice-Prime, \$48 to \$51.
Good-Utility, \$45 to \$49.
Woolled Slaughter Lambs:
Choice-Prime, \$47 to \$49.
Good-Utility, \$45 to \$47.
Slaughter Ewes, \$8 to \$16.
Feeder Lambs, All Weights, \$42 to \$45.

HOGS—

200 to 250 lbs., No. 1, \$50.50 to \$51.00.
250 to 300 lbs., No. 1, \$49.50 to \$50.00.
Heavy Hogs, 250 lbs. up, \$45 to \$48.
Light Hogs, 190 lbs. and down, \$40 to \$45.

Sows:

Fancy Light, \$40 to \$42.
300-500 lb., \$35 to \$41.
500 lbs. and up, \$35 to \$39.

Boars and Stags:

All Weights, \$37 to \$42.

Feeder Pigs:

Per Head, \$20 to \$25.
Est. 40 lb. pigs, \$35 to \$38.

HAY—

1st Cutting, per bale, 70c to \$1.00.
2nd Cutting, per bale, \$1.00 to \$1.70.

STRAW—

Per Bale, 50c to 65c.

COWS

Tested Dairy Cows, \$300 to \$550.
Tested Red Type Cows, \$150 to \$250.

★ MICHIGAN MIRROR ★

By Elmer E. White, Secretary, Michigan Press Association

Half Moons Going

The "privy" patches along Michigan highways look ever more modern as the state moves ahead with a rest stop renewal program.

Back in 1968, the state Highway Commission ordered a changeover from the 36 "rustic" rest stop facilities to modern equipment. Four years later, after a dozen of the rest stops were switched, the commission called for a speedup.

Today, three of the remaining 24 facilities have been dropped from the list (because of relocation of the entire rest stop, etc.). Nine others have been modernized—seven during 1975.

No rusties by 1978 is the rallying cry. Jack Burton, supervisor of roadside development for the Department of State Highways and Transportation, says the remaining 12 half-moon type facilities will be under contract for modernization by the end of 1978 or shortly thereafter.

What does all this cost? The latest modernization, in Otsego county, cost nearly \$72,000.

JUST REMINISCING

Items Taken from the files of The Chelsea Standard

4 Years Ago...

Thursday, Jan. 20, 1972—

Doug Van Gorder and Tom Hubert, members of the Chelsea High School band were chosen to participate in the Lansing All-Star Band. Van Gorder is second chair oboe player and Hubert plays first chair trombone.

Mrs. Dorothy Miller became the first woman in the history of Chelsea Jaycees to receive the Distinguished Citizen Award Tuesday night at the annual Bosses Night dinner.

Village president A. E. Fuiks signed a proclamation officially designating National Jaycee Week, Jan. 16-22. Chairman of Jaycee Week is Alan Johnston.

Terry Lawrence was installed at the annual Bosses Night dinner as the first Jaycee under 21 years old. Also installed were Tim Orbring and Terry Whitesall.

14 Years Ago...

Thursday, Jan. 18, 1962—

Mr. and Mrs. Neil Fahrner are the new owners of Weber's Dairy.

The question on the ballot without words, Ed wanted to know. And if you draw the faces of people running for office, you got to be careful to get a impartial artist. Speaking of horse sense, Bug Hookum said the city fathers in Charleston final did the right thing. First they said horses on city streets had to wear dipers, then they changed their mind and said horse and buggy drivers had to have radios to call for a cleanup when nature took its course, and last Bug heard they had decided the arrangement that had worked for 250 years could work a few more.

Mister Editor, if you can house-break a dog why can't you street-break a horse, or is that plan to scientific?

Yours truly,
Uncle Lew.

Safer Deer Hunts

Thirteen persons died in hunting accidents during 1975, and there were 24 reported gun-related accidents during Michigan's recent firearm deer season.

Too many, of course, especially when you consider that carelessness and lack of judgment by some hunters caused over one-half of all reported firearm accidents.

But Dr. David Jenkins, head of the Department of Natural Resources Wildlife Division, says the accident rate per 100,000 deer hunters has been steadily decreasing for over 30 years.

Accidents numbering between 60 and 80 a year were common 20 years ago when roughly 400,000 deer hunters were afield, Jenkins notes. And, he says, the worst season on record was back in 1932.

They assumed ownership Jan. 2 from Mr. and Mrs. Fred Weber.

Paul E. Mann, executive vice-president and cashier of Chelsea State Bank since February, 1956, was named president, effective at once at the annual meeting and election of officers Jan. 16.

Chelsea high school came from behind in the last 18 seconds of play to defeat Manchester High, 53-52, in a Washtenaw Conference basketball game. Curt Farley led Chelsea with 20 points while Don Joseph followed with 14. Bob Riemschneider followed in scoring with 13 points.

Ted Kayser is now stationed at the National Technical Training Center at Memphis, Tenn. He is the son of Mr. and Mrs. Edmund Kayser, 4701 Kalmbach Rd.

24 Years Ago...

Thursday, Jan. 17, 1952—

Chelsea High school debating teams were featured on the after-dinner program at the Chamber of Commerce meeting Tuesday evening. Members of the affirmative team are Jean Schweinfurth and Barbara Speer, while those on the negative team are Sandra Baldwin and David Bertke.

Don Schrader, son of Mr. and Mrs. Walter Schrader, Sr., and George Heydlauff, son of Mr. and Mrs. Lloyd Heydlauff, won junior varsity football awards at Western Michigan College.

Mrs. Edith Eaton was elected president of the Women's Fellowship of the Congregational church at the annual meeting held at the church Thursday afternoon. Junior Reiley got the thrill of his life last Thursday afternoon when he speared an 18-lb. pike through the ice at Half Moon Lake.

34 Years Ago...

Thursday, Jan. 15, 1942—

Kolb's Restaurant was burglarized Tuesday night and a total of about \$50 in bills and silver was taken. The discovery was made by Marshal Sam Mohrlock.

A project known as the "Victory Book Campaign" is being launched by the local library committee under the guidance of the American Red Cross. Collecting books for soldiers, sailors and marines are Mrs. George Walworth and Mrs. A. A. Palmer.

The Chelsea State Bank at its annual meeting on Tuesday afternoon re-elected the following board of directors: Dr. Andros Gulde, John Kalmbach, Arthur J. Walz, Leigh G. Palmer, Howard S. Holmes Dr. A. A. Palmer, Paul G. Schaible and John L. Fletcher. Village President A. Mayer has appointed Dr. E. J. Quirk as chairman of the Medical Emergency Committee of the local Civilian Defense Council.

Why you should let H&R Block worry about your income taxes.

We are income tax specialists. We ask the right questions. We dig for every honest deduction. We want to leave no stone unturned to make sure you pay the smallest legitimate tax.

Get a little piece of mind.

H&R BLOCK
THE INCOME TAX PEOPLE

105 N. MAIN ST.
CHELSEA, MICH.
475-2752

7980 ANN ARBOR ST.
DEXTER, MICH.
426-4313

200 RIVERSIDE
MANCHESTER, MICH.
428-7833

Registration Required For Trail Bikes, ORV

Owners of trail bikes, dune buggies and other off-road vehicles (ORV) will have to register them with the Secretary of State as of May 1.

Governor Milliken recently signed into law a bill which requires this registration of ORVs, according to Representative Mike Conlin (R-23rd District).

"This bill is designed to protect valuable natural resources while at the same time authorizing the use of ORVs in certain areas," Conlin said.

The Department of Natural Resources will draft rules to determine which trails and roads will be open to ORV use on state lands other than state games areas, parks or recreation areas.

The registration fee will be \$9 for a three-year licensing period. "The fees will be used to construct and maintain special trails for these types of vehicles," Conlin said. "In addition, the law also says that a safety education program must be operated by the DNR for owners of these vehicles."

Children under 12 are restricted from using ORVs unless supervised by an adult.

at the same time authorizing the use of ORVs in certain areas," Conlin said.

The Department of Natural Resources will draft rules to determine which trails and roads will be open to ORV use on state lands other than state games areas, parks or recreation areas.

The registration fee will be \$9 for a three-year licensing period. "The fees will be used to construct and maintain special trails for these types of vehicles," Conlin said. "In addition, the law also says that a safety education program must be operated by the DNR for owners of these vehicles."

Children under 12 are restricted from using ORVs unless supervised by an adult.

Snowmobiles, regulated under an existing law, are not affected by the new law. Also exempted are farm, military, fire, emergency, construction, logging and police vehicles.

The law also:

- Authorizes local units of regulating ORV operation within their boundaries,
- Prohibits the operation of ORVs on private property without permission and makes the operator liable for damage and
- Requires manufacturers to affix a vehicle identification number to ORVs beginning Jan. 1 to help identify irresponsible operators.

Kensington Metropark near Milford has cross-country ski rental service and a trail center at the Golf Course Starter Building open this winter. For details phone 685-1561 (Milford).

To get rich, amuse the people; to stand alone, know something; to be feared, be above reproach.

DUNBAR'S DEXTER LOCKER

PAUL DUNBAR, OWNER

8083 MAIN ST., DEXTER

PHONE 426-8466

HAMBURGER PATTIES

79^c lb.

(In 10-Lb. Pkgs.)

SLAB BACON (Chunks)

.99^c lb.

98c lb. BEEF SIDES

Rebate Pre-cut \$20

\$1.19 lb. HIND QUARTERS

Ready \$10

86c lb. FRONT QUARTERS

To Go \$10

Buy Ready-Cut Sides and Save

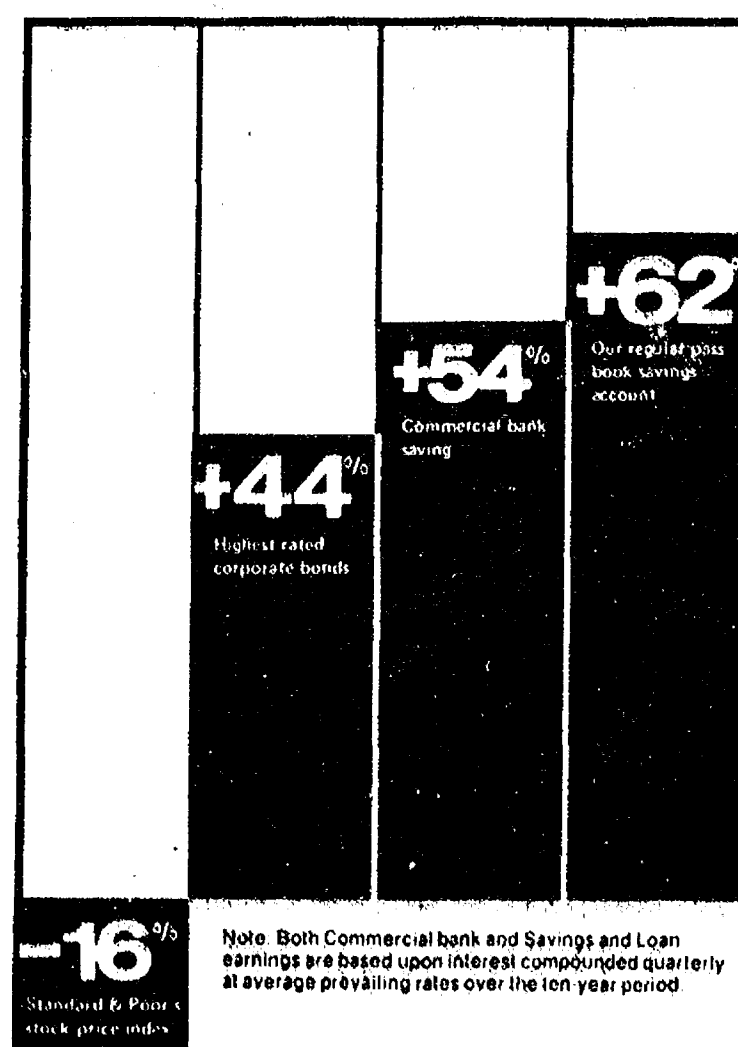
Call for More Information

Discount to Civic Groups - We Accept Federal Food Stamps

CUSTOM SLAUGHTERING & PROCESSING

Your savings account is an investment

Compare the interest earned on money invested in various ways for the ten-year period from January 1965 to January 1975.



Perhaps you don't think of your money deposited in one of our regular passbook savings accounts as money "invested." An "investment" might mean money tied up in corporate bonds or other securities. Well, compare the earnings over the last ten years. Not only is the yield high, but

in our savings accounts your money is safe, protected by the Federal Savings and Loan Insurance Corporation, a U.S. Government agency. So come in today and invest in any of our various types of high-yielding savings accounts. Watch your investment grow.

ANN ARBOR FEDERAL SAVINGS

10 OFFICES TO SERVE YOU IN ANN ARBOR, CHELSEA, DEXTER, YPSILANTI, MANCHESTER, BRIGHTON, SALINE

Member FSILC

WASHTENAW COMMUNITY COLLEGE

AND

CHELSEA PUBLIC SCHOOLS

OFFER CLASSES BEGINNING JANUARY 12, 1976
AT CHELSEA HIGH SCHOOL

Winter Semester 1976 - Classes Begin Monday - January 12, 1976
Registration 6:30-7:00 p.m. preceding First Class-time on Scheduled Day
Registration also accepted Huron River Campus, Ann Arbor
From December 8 through January 5th.

\$12.50 per Credit Hour Plus Admission Fee for New Students.

COURSE NUMBER	COURSE TITLE	PREREQUISITE	CREDIT HOURS	SEC. NO.	DAYS	HOURS
ACC 092	Fund./Accounting	Non-Majors, ACC 091	3	055	Thurs.	7-10 p.m.
BPR 100	Blueprint/Construction Tr.	—	2	055	Wed.	7-9 p.m.
EC 222	Principals Economics	—	3	055	Tues.	7-10 p.m.
ENG 122	English Composition	Eng. 111 or Equiv.	3	055	Wed.	7-10 p.m.
ENG 170	Intro./Literature	—	3	055	Thurs.	7-10 p.m.
GB 122	Business Law	GB 111 or Equiv.	3	055	Mon.	7-10 p.m.
HST 102	Western Civ. from 1600	—	3	055	Thurs.	7-10 p.m.
MTH 039	Basic Math	—	3	055	Wed.	7-10 p.m.
MTH 090	Found./Occupational Math	Math 089	3	055	Wed.	7-10 p.m.
MTH 097A	Intro./Algebra	Math 089	3	055	Wed.	7-10 p.m.
MTH 097B	Intro./Algebra	Math 097A	3	055	Wed.	7-10 p.m.
MTH 148	Computer Games	—	1	055	Wed.	6-7 p.m.
MTH 169A	Intermed. Algebra	—	3	055	Wed.	7-10 p.m.
MTH 169B	Intermed. Algebra	Math 169A	3	055	Wed.	7-10 p.m.
PHO 090	General Photography	—	1	055	Mon.	7-10 p.m.
PLS 108	Government & Society	—	3	055	Tues.	7-10 p.m.
PHS 142	Environmental Science	—	4	055	Tu. & Thurs.	7-9 p.m.
PSY 150	Industrial Psychology	—	3	055	Mon.	7-10 p.m.
PSY 200	Child Psychology	—	3	055	Tu.	7-10 p.m.
PSY 207	Social Psychology	—	3	055	Mon.	7-10 p.m.
SO 100	Shorthand	—	4	055	Mon. & Wed.	7-9.30 p.m.

NOTE: MINIMUM OF 10 STUDENTS REQUIRED FOR ON-GOING CLASS - REGISTER EARLY!!!!!!

★ District Court Proceedings ★

Week of Jan. 6-12
Nancy Baines pled guilty to charges of speeding. Fines and costs, \$26.
Cynthia McKeen pled guilty to charges of speeding. Fines and costs, \$26.
Emily Talbot pled guilty to charges of speeding. Fines and costs, \$26.
Danny Ausmus was found guilty of violating a license restriction. Fines and costs, \$35.
Dolores Spears was found guilty of speeding. Fines and costs, \$24.
Bradley Wolfe was found guilty of going the wrong way on a one-way street. Fines and costs, \$17.
Michael Clark was sentenced to pay fines and costs of \$150 and to one year probation on charges of driving while under the influence of liquor.
Robert Szabo pled guilty to charges of possessing open intoxicants in a motor vehicle. Fines and costs, \$35.
James Fiegel pled guilty to charges of speeding. Fines and costs, \$28.
Suzanne Belaire pled guilty to charges of driving without an operator's license on her person. Fines and costs, \$12.
Franklin Newman pled guilty to charges of careless driving. Fines and costs, \$22.
Joseph R. Dunville was sentenced to pay fines and costs of \$250 and to attend the Alcohol Safety Action program on charges of driving while under the influence of liquor.
James L. Bauer was found guilty of hunting without displaying a backtag. Fines and costs, \$15.
Reuben Lesser was found guilty of hunting without displaying his backtag. Fines and costs, \$15.
Fred Martin was found guilty of driving without due care and caution. Fines and costs, \$22.
David Hatfield pled guilty to charges of speeding. Fines and costs, \$32.
Timothy Blankenbaker pled guilty to charges of speeding. Fines and costs, \$32.
Valerie Spichard pled guilty to charges of speeding. Fines and costs, \$24.
John Osborne appeared on a bench warrant for failing to pay

previous fines and costs. Total fines and costs, \$38.
William Yuhasz pled guilty to charges of speeding. Fines and costs, \$28.
Gerald Curtis pled guilty to charges of larceny under \$100. Fines and costs, \$50.
Lisle Goode pled guilty to charges of being drunk and disorderly. Fines and costs, 60 days in jail or in a location recommended by mental health.
Kathy Sartin pled guilty to charges of failing to yield the right of way. Fines and costs, \$22.
David Moore was found guilty of speeding. Fines and costs, \$44.
Billy Duncan pled guilty to charges of being drunk and disorderly. Fines and costs, \$50.
David Schlecht was sentenced to pay fines and costs of \$250 and to one year probation on charges of driving while under the influence of liquor.
Joseph Luplaw pled guilty to charges of speeding. Fines and costs, \$22.
James Speegberg was found guilty of speeding. Fines and costs, \$22.
Brian Davis pled guilty to charges of driving too fast for conditions. Fines and costs, \$22.
Two Arrested on D&D Charges
Charged with being drunk and disorderly, Jimmy Collingsworth of 19000 Old US-12, pled guilty in 14th District Court Monday while his companion, George E. Lovely of 519 Lane St., pled not guilty to the charges.
Chelsea officers Roger Graves and Robert Browning arrested the pair early Saturday morning at the Pub Bar on Main St., where they were dispatched to clear up a fight in progress. Officers arrived to find them fighting. They arrested Collingsworth and Lovely and took them to the Washtenaw County Jail where bonds were posted.
Collingsworth will be sentenced on the charges on Feb. 9. Lovely will be tried that same day.

Virginia Perkins was sentenced to pay fines and costs of \$250, to six months probation and to attend the Alcohol Safety Action Program on charges of impaired driving.
Richard Bassett was found guilty of speeding. Fines and costs, \$62.
Lorrie Kadhodazadeh was found guilty of careless driving. Fines and costs, \$35.
Mark Grammatico was sentenced to pay fines and costs of \$250 on charges of impaired driving.
Frank O. Willis pled guilty to charges of driving with license suspended. Fines and costs, \$100 and 3 days or 20 days in jail.
Scott Goins was found guilty of failing to report an accident. Fines and costs, \$50.
Richard Walz was found guilty of possessing open intoxicants in a motor vehicle. Fines and costs, \$35.

Community Service Unit Serving Area

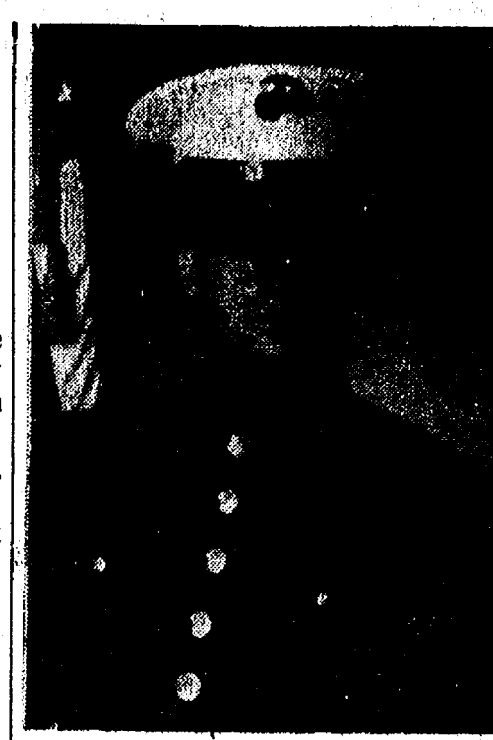
Riverside Cabin situated behind the Fire Hall at 8140 Main St. in Dexter, is a new community service.
Staffed by volunteers, the Cabin will work closely with other agencies, Community Services Agency, Drug Help, Planned Parenthood and Public Health Nurses. Persons needing help of any kind may telephone the Riverside Cabin for information and referral services.
Mrs. Katy Harat of the Community Services Agency will be available at the Cabin Monday, Tuesday and Wednesday from 9 a.m. to 3 p.m. Volunteer staff will be available seven days a week from 3 to 8 p.m.
Referral services from Riverside Cabin are for all persons living in the western out-county area including Chelsea and Dexter residents.
For further information, contact a volunteer at the Cabin by phoning 426-2777.

Hockey Team Wins Over Western, 5-1

Chelsea Highschoolers hockey team won their second consecutive Michigan South Central Hockey League game Sunday, Jan. 11 in convincing style.
Scoring five unanswered goals in the first two periods, Chelsea dominated the game to a point where the frustrated Western coach pulled his team off the ice at the four minute mark of the third period.
Western had scored a goal earlier in the third period but after that point couldn't penetrate the Chelsea defense led by goalie Mike Check.
Goals scored for Chelsea were by Harold Vandervoort with two and Greg Hastings, Steve Check and Don White with one each.
The win moved Chelsea into a second-place tie in the Toland Division.
Sunday, Jan. 18, at 7:30 p.m., Chelsea will play outside its division, meeting Adrian of the Banner Division. The Banner Division consists of four teams, Parkside, Northwest, Jackson High, and Adrian.
The Toland Division is made up of teams from Hanover-Horton, Chelsea, Tecumseh, Western and Napoleon.
The Chelsea-Adrian game will not affect either team's standings. Chelsea's next divisional game will be played Sunday, Jan. 25 at 6 p.m., against Hanover-Horton, the division leader.

Cagers Lose ...

(Continued from page one)
medal. There will also be a trophy for the winning team and the runner-up.
Officiating the tournament will be John Ruhl of Dexter, Charles Beatty of Ypsilanti, and John Nordlinger of Ann Arbor.
Persons interested in attending may purchase admissions at the door for \$1 adult and 50 cents student, afternoon session. Evening session prices will be \$1.50 for adults and \$1 for students.



GRANT B. WESTFALL
Grass Lake Area Youth Completes Recruit Training at San Diego

Marine Private Grant B. Westfall, son of Mr. and Mrs. Philip B. Westfall of 5500 Norvell Rd., Grass Lake, was graduated from recruit training at the Marine Corps Recruit Depot, San Diego, Calif.
Physical conditioning, discipline and teamwork are emphasized during Marine recruit training. Classes include instruction in close order drill, Marine Corps history, first aid, uniform regulations and military customs and courtesies.

Wrestling Tourney

(Continued from page one)
14 points, Don Morrison had six, Randy Sweeney had five, Pete Feeney had four, and Anthony Houle had three.
The Bulldogs will meet Saline this Friday evening. And despite the Bulldogs' losing season, Tom Balistrere does not predict a loss. "We are trying to learn and improve and we have," he remarked. "If we play well, you never know what we will be able to do."
About one million hospitalized patients and more than 12 million outpatients were treated at Veterans Administration facilities last year.

JC Cribbage Tournament Starts Jan. 26

Cribbage lovers will have an opportunity to enjoy four consecutive Monday evenings of cribbage play beginning Jan. 26 in the Jaycee annual Cribbage Tournament.
Players may register for the tournament between 6:30 and 7 p.m. Monday, Jan. 26 at Chelsea Lanes, where the tournament is to be held. A \$2 entry fee will be required to play. The tournament is open to both men and women 18 years and older.
According to Dale Messing who is co-ordinating this year's tournament for the Jaycees, trophies will be awarded to the first four places. Messing also requested that persons with cribbage boards and cards bring them "so that there will be enough to go around."
The tournament, which has been held for four or five years now, is not a profit-making venture for the Jaycees. "We are lucky if we break even," Messing said. "We do it because it is a lot of fun."
For further information contact Messing at 475-7370 or 475-7026. Refreshments will be available during tournament play.

Intramurals ...

(Continued from page one)
and Schwarze. The teams of Brown and Owings are 0 and 1. Team scores are Sabo 18, Brown 10, and Schwarze 20, Owings 10. Amanda Schwarze was high scorer for the Eastern division girls with 14 points.

Wrestling Schedule

Jan. 15-South Lyonhome
Jan. 20-Lumen Christithere
Jan. 22-Milanthere
Jan. 24-Chelsea Tournament.
Jan. 29-Dexterhome
Feb. 3-Salinethere
Feb. 7-League Meet ...Brighton
Feb. 11-Jackson Northwest, home
Feb. 14-District Meet.

FFA Chapter Selling Seeds
Planning to plant a garden this year? If so, this might just be the time to order your vegetable and flower seeds.
Members of Chelsea High school FFA chapter will be selling seeds this year as part of a fund-raising project to support their club and to help finance club activities. Seeds may be ordered from FFA members or by contacting Chelsea High school and leaving your name and phone number so that an FFA member can contact you. All orders must be placed by March.

SOUTHERN BOY MANOR MOTEL
Efficiency Units - By Day, Week, or Month
13190 M-52
PHONE (517) 851-4213
(2 miles south of Stockbridge)

Gifts For All Occasions
★ Diamonds ★ Watches
★ Opals ★ Clocks
★ Hallmark Cards
★ Expert Watch and Ring Repair
20% OFF On All Jewelry
LEWIS JEWELERS
Maple Village Shopping Center
Maple and Jackson Rds., Across from Fox Theatre
Mon. thru Sat., 9:30 till 9:00
Sunday 11:00 till 5:00
Free Parking
Ann Arbor 994-5111

Full Line Supermarket
MARATHON GAS PUMPS
LOTTERY TICKETS
BEER - WINE - LIQUOR
U.S.D.A. CHOICE BEEF
AUTHORIZED FOOD STAMP STORE

Jiffy market
Big Enough To Serve You . . . Small Enough To Know You!

Open 7 Days A Week
7 a.m. to 10 p.m.
Corner Werkner & Sibley Rds. PHONE 475-1701
Sale Prices Effective Thursday, Jan. 15th thru Sunday, Jan. 18th

Guaranteed Satisfaction - Courteous Service - U.S.D.A. Choice Meats

WAY BAKING CO.
KLEEN-MAID BREAD 1 1/4-Lb. Loaves **3 for \$1.00**
KRAFT'S NO. 1 SALAD DRESSING Quart **89¢**
MIRACLE WHIP Quart Jar
BULK LONGHORN COLBY **\$1.29**
STORE CHEESE Lb.
DOLLY MADISON ASSORTED **12 3/4-Oz. Box 79¢**
DONUTS 12 3/4-Oz. Box
VELVET CREAMY **2-Lb. Jar \$1.49**
PEANUT BUTTER 2-Lb. Jar
U. S. NO. 1
JONATHAN APPLES ... 3 lbs. **49¢**

U.S.D.A. Choice Freezer Beef
SIDES - FRONTS - HINDS - LOINS - FULL RIB
Cut, Wrapped, Frozen To Your Specifications.
LOCAL FARM BEEF FOR SALE.
CORN-FED BEEF AT ITS BEST!
Custom Cutting, Grinding, Wrapping and Freezing
YOUR BEEF
QUICK SERVICE on HAULING and SLAUGHTERING

BASKART SPECIAL
FRESH GROUND - LEAN
HAMBURGER ... lb. **79¢**
SATISFACTION GUARANTEED
HOLSUM
Hamburger or Hot Dog Buns 8-Ct. Pkg. **49¢**
FRITO-LAY JIFFY MARKET
LUNCH BOX SPECIAL
6 PACK (3/4-OZ.) FRITO - CORN CHIP
6 PACK (3/4-OZ.) CHEE-TOS CHEESE PUFFS
6 PACK (1/2-OZ.) LAY'S POTATO CHIPS
YOUR CHOICE
49¢ 6 pack

JIFFY MARKET MEAT DEPT.
WHOLE PORK LOINS
\$1.29 lb. As is or Sliced Lean and Tender
SMOKED PORK SHOULDER
SMOKED PICNICS ... 4-6-Lb. Avg. **89¢ lb.**
PORK STEAK lb. **\$1.15**
HICKORY SMOKED SLAB
BACON, lb. \$1.09
32-OZ. PKG. COURTLAND VALLEY'S FINEST
Sauerkraut .. **39¢**
CAMELOT SKINLESS
Franks 2 lbs. \$1.69
CAMELOT
Liver Sausage or Braunschweiger .. lb. **69¢**
1-LB. HOME-MADE GARLIC OR REG.
Pork Sausage \$1.29
CAMELOT CHUNK
Bologna .. lb. **79¢**

JIFFY MARKET'S EVERY NIGHT SALE 7 NIGHTS A WEEK EVENING SPECIALS, 6 p.m.-10 p.m.

FARM MAID MILK One Gal. **\$1.39**
KLEEN MAID BREAD 1 1/4-Lb. Loaf **29¢**
GLAZIER CLUB ICE CREAM 1 1/2 gal. **69¢**

THESE ITEMS JAN. 15th THRU JAN. 21st

JIFFY MARKET SPECIAL!
U.S.D.A. CHOICE BEEF
STEAK SALE
T-Bone Steak .. **\$2.29**
Club Steak ... **\$2.19**
Sirloin Steak ... **\$1.89**
Porterhouse Stk. **\$2.39**
Tender, Delicious Steak that you can enjoy!

JIFFY MARKET MARATHON GAS
Top Quality Gas at Fair Prices, While Supply Lasts
REGULAR GAS
OPEN 7 DAYS A WEEK 7 a.m. to 10 p.m.
55.9 Gal. Including All Taxes

+ Services in Our Churches +

CONGREGATIONAL CHURCH
(United Church of Christ)
The Rev. Carl Schwarm, Pastor
Thursday, Jan. 15—
7:30 p.m.—Choir.
Sunday, Jan. 18—
9:00 a.m.—Confirmation.
10:30 a.m.—Sunday school and worship. Installation of 1976 Officers and committee.
7:30 p.m.—Church council.
Thursday, Jan. 22—
7:30 p.m.—Choir.

OUR SAVIOR LUTHERAN CHURCH
1515 S. Main, Chelsea
The Rev. William H. Keller, Pastor
Thursday, Jan. 15—
7:30 p.m.—Choir.
Sunday, Jan. 18—
9:00 a.m.—Sunday school and Bible classes.
10:30 a.m.—Worship service, with Holy Communion.
Wednesday, Jan. 21—
4:00 p.m.—6:00 p.m.—Confirmation, 6th and 7th grades only.
Thursday, Jan. 22—
7:30 p.m.—Choir.

ST. THOMAS EVANGELICAL LUTHERAN
Ellsworth and Haab Rds.
The Rev. Jerome Dykstra, Pastor
Thursday, Jan. 15—
8:00 p.m.—Choir rehearsal.
4:15 p.m.—Confirmation class.
Sunday, Jan. 18—
9:30 a.m.—Sunday school and Bible class.
10:45 a.m.—Worship service with Holy Communion.
Tuesday, Jan. 20—
10:00 a.m.—Bible study.
Thursday, Jan. 22—
4:15 p.m.—Confirmation class.
8:00 p.m.—Choir rehearsal.

ST. JOHN'S UNITED CHURCH OF CHRIST
Rogers Corners
The Rev. Carl Asher, Pastor
10:30 a.m.—Worship service.

FIRST UNITED METHODIST CHURCH
The Rev. Marvin H. McCallum, Pastor
Thursday, Jan. 15—
1:00 p.m.—Quilting group will meet at the home of Mrs. Mary Kumpf.
6:30 p.m.—Weight Watchers will meet in the social center of the church.
Saturday, Jan. 17—
8:30 a.m.—Christian Home group will meet at the home of Paul and Joanne Weber.
Sunday, Jan. 18—
10:00 a.m.—Worship service. Nursery provided.
10:20 a.m.—Church school, four years through the 6th grade.
11:00 a.m.—Coffee and punch hour.
11:15 a.m.—Junior, senior and adult church school.
7:00 p.m.—Praise choir.
Tuesday, Jan. 20—
9:30 a.m.—Charismatic Bible Sharing group will meet in the educational unit.
Wednesday, Jan. 21—
9:00 a.m.—Sarah Circle will meet at the home of Mrs. Ruth Harbaugh.
3:30 p.m.—Kinder Choir.
4:00 p.m.—Glory Choir.
Thursday, Jan. 22—
9:00 a.m.—Literature group will meet in the educational unit.
1:00 p.m.—The Quilting group will meet at the home of Mrs. Mary Kumpf.

WATERLOO VILLAGE UNITED METHODIST CHURCH
8118 Washington St.
Every Sunday—
11:15 a.m.—Worship service.
BAHA'I FIRESIDE
Every Thursday—
8:00 p.m.—At the home of Toby Peterson, 705 S. Main St. Anyone wishing to learn about the Baha'i faith is welcome.

ST. PAUL UNITED CHURCH OF CHRIST
The Rev. R. J. Ratliff, Pastor
Saturday, Jan. 17—
9:00 a.m. and 10:15 a.m.—Confirmation.
Sunday, Jan. 18—
9:00 and 10:30 a.m.—Church school.
10:30 a.m.—Worship.
Tuesday, Jan. 20—
1:00 p.m.—Needle and Thread.
3:30 p.m.—Joyful Noise.
7:30 p.m.—Church council meeting.
Wednesday, Jan. 21—
1:00 p.m.—World Wide.
3:30 p.m. to 5:30 p.m.—Junior Youth Fellowship.
8:00 p.m.—Chancel choir

ST. BARNABAS EPISCOPAL CHURCH
20530 Old US-12
The Rev. Fr. Jerrold F. Beaumont, B.S.P.
Every Sunday—
10:00 a.m.—Holy Communion (first, third and fifth Sundays, and 8 p.m. every Wednesday).
10:00 a.m.—Morning prayer. Second and fourth Sundays. Church school and nursery every Sunday.
Every Wednesday—
9:00 p.m.—Study and discussion groups.
First Wednesday of every month Bishop's Committee.
Third Thursday of every month—Episcopal church women.

FIRST ASSEMBLY OF GOD
The Rev. Thode B. Thodeson, Pastor
Every Sunday—
9:45 a.m.—Sunday school.
11:00 a.m.—Worship service.
7:00 p.m.—Midweek services.
Every Wednesday—
7:00 p.m.—Christ's Ambassadors.
Every Friday—
1:00 p.m.—Ladies Bible study.

NORTH LAKE UNITED METHODIST CHURCH
The Rev. David Stiles, Pastor
Every Sunday—
8:30 a.m.—Early service.
10:00 a.m.—Worship service. Receiving of new members.
10:00 a.m.—Sunday school.
IMMANUEL BIBLE CHURCH
145 E. Summit St.
The Rev. LeRoy Johnson, Pastor
Every Sunday—
9:45 a.m.—Sunday school, nursery provided.
11:00 a.m.—Morning worship. Nursery provided.
6:00 p.m.—Evening worship.
Every Wednesday—
7:00 p.m.—Family hour, prayer meeting, and Bible study.

ST. MARY CATHOLIC CHURCH
The Rev. Fr. David Philip Dupuis, Pastor
Mass Schedule:
Every Saturday—
4:00-5:00 p.m.—Confessions.
7:00 p.m.—Mass.
Immediately after 7 p.m. Mass—Confession.
Every Sunday—
Winter schedule:
8:00, 10:00, 12:00 noon—Mass.
Summer schedule:
7:00, 9:00, 11:00 a.m.—Mass.

CHURCH OF JESUS CHRIST OF LATTER-DAY SAINTS
Meetings at
St. Barnabas Episcopal Church
20500 Old US-12
Every Sunday—
11:00 a.m.—Priesthood meeting.
12:30 p.m.—Sunday school.

ZION LUTHERAN CHURCH
Corner of Fletcher, Waters Rds.
The Rev. John R. Morris, Pastor
Sunday, Jan. 11—
9:00 a.m.—Sunday school.
10:15 a.m.—Worship.

FIRST UNITED PRESBYTERIAN CHURCH
Unadilla
The Rev. T. H. Llang, Pastor
Every Sunday—
9:45 a.m.—Sunday school.
11:00 a.m.—Worship service.

CHURCH OF CHRIST
13881 Old US-12, East
Evangelist John M. Hamilton
Every Sunday—
10:00 a.m.—Church school.
11:00 a.m.—Worship service.
Nursery will be available.
Every Wednesday—
7:30 p.m.—Bible study.

METHODIST HOME CHAPEL
Chaplain Ira Wood, Pastor
Every Sunday—
8:45 a.m.—Worship service.

BETHEL EVANGELICAL AND REFORMED CHURCH
(United Church of Christ)
Freedom Township
The Rev. Roman A. Reineck, Pastor
Every Sunday—
10:00 a.m.—Worship service.

LOSE UGLY FAT
Start losing weight today or money back. MONADEX is a tiny tablet and easy to take. MONADEX will help curb your desire for excess food. Eat less—weigh less. Contains no dangerous drugs and will not make you nervous. No strenuous exercise. Change your life... start today. MONADEX cost \$3.00 for 20 day supply. Large economy size is \$5.00. Also try AQUATASS—day work energy to help you lose weight. AQUATASS is a "water pill" that works \$3.00. Both guaranteed and money back.

CHURCH OF CHRIST
145 E. Summit St.
Chelsea, Mich. 48118

CHURCH OF CHRIST
145 E. Summit St.
Chelsea, Mich. 48118

NORTH SHARON BIBLE CHURCH
Sylvan and Washburne Rds.
The Rev. William Enslin, Pastor
Every Sunday—
10:00 a.m.—Sunday school. (Nursery will be available.) Junior church classes.
11:00 a.m.—Worship service.
6:00 p.m.—Senior High Youth meeting. Youth Choir.
7:00 p.m.—Evening worship service. (Nursery available.)
All services interpreted for the deaf.
Every Wednesday—
7:00 p.m.—Bible study and prayer meeting. (Nursery available.)
Bus transportation available: 428-7222.

FIRST UNITED METHODIST
Parks and Territorial Rds.
Every Sunday—
9:15 a.m.—Morning worship.
10:00 a.m.—Sunday school.

CHELSEA BAPTIST CHURCH
377 Wilkinson St.
The Rev. James Stacey, Pastor
Every Sunday—
9:45 a.m.—Sunday school for the whole family.
11:00 a.m.—Morning worship service and children's church.
7:00 p.m.—Evening service, informal singing, sharing, study and discussion. (Nursery care provided for all services).
Home Bible Studies each week in the homes of the leaders.
Teen Ministry, Sunday at 6 p.m. and study groups during the week.

SALEM GROVE UNITED METHODIST CHURCH
3320 Notten Rd.
The Rev. Gerald R. Parker, Pastor
Every Sunday—
9:30 a.m.—Sunday school.
10:30 a.m.—Worship service.

ST. JOHN'S EVANGELICAL AND REFORMED CHURCH
(United Church of Christ)
Francisco
The Rev. Virgil King, Pastor.
Every Sunday—
10:30 a.m.—Worship service.
Sunday school.

ST. JACOB EVANGELICAL LUTHERAN CHURCH
12501 Riethmiller Rd., Grass Lake
The Rev. Andrew Bloom, Pastor
Every Sunday—
9:00 a.m.—Worship service.
10:15 a.m.—Divine services.

FIRST CHURCH OF CHRIST SCIENTIST
1883 Waghentaw Ave., Ann Arbor
Every Sunday—
10:30 a.m.—Sunday school, morning service.

GREGORY BAPTIST CHURCH
The Rev. Paul White, Pastor
Every Sunday—
9:45 a.m.—Sunday school.
11:00 a.m.—Morning worship.
6:00 p.m.—Young people.
7:00 p.m.—Evening worship.
7:30 p.m.—Thursday mid-week worship service.

'The Gospel Road' Film Will Be Shown Sunday At Our Savior Church

The story is old, but the perspective is up-dated and brought into sharp focus by the film "The Gospel Road" to be shown Sunday, Jan. 25 at Our Savior Lutheran Church, 1515 S. Main St. Chelsea. The showing will begin at 7:00 p.m.

The public is invited to view this film which tells the story of Jesus Christ "in a realistic and meaningful way" according to pastor William H. Keller. The film is a unique blend of Bible-based narrative, an abundant supply of specially written songs, and a series of in-depth character portrayals, with Israel itself as the mixing bowl.

All of America's dental schools are dependent to some extent on advanced facilities in Veterans Administration hospitals.

The Country Pulpit:

WHAT DO YOU THINK!

One of the most widely read books of all time is "The Decline and Fall of the Roman Empire." Written in 1788 by Edward Gibbons, the English historian, the book sets forth five basic reasons why great civilizations (such as the Roman Empire) withered and died. The five reasons are:

1. The undermining of the dignity and sanctity of the home, which is the basis for home society.
2. Higher and higher taxes; the spending of public money for free bread and circuses for the populace.
3. The mad craze for pleasure, sports becoming every year more exciting, more brutal and more immoral.
4. The building of great armaments when the real enemy is within, and the decay of individual responsibility.
5. The decay of religion; faith fading into mere form, losing touch with life, losing power to guide people.

The average age of the world's greatest civilization, Gibbons points out, has been 200 years. And in all the world's history all the great nations have passed through this process: from bondage to spiritual faith; from spiritual faith to great courage; from courage to liberty; from liberty to abundance; from abundance to selfishness; from selfishness to complacency; from complacency to apathy; from apathy to dependence, and from dependence back again to bondage.

The United States in a few months will be 200 years old. What do you think?

Blessed is the nation whose God is the Lord. Psalms 33:12.

IMMANUEL BIBLE CHURCH
145 E. Summit St. Chelsea, Mich. 48118

SOUTH ELEMENTARY SCHOOL NOTES

FROM THE PRINCIPAL—

Our Campbell Soup Label collection ended on Jan. 14. As of Jan. 9 we have 11,800 labels. The final count will be given in the next issue of South School News. I would like to express thanks to all that have helped in the collection drive. A special thanks to Mrs. Gerald Kenney for bundling the labels.

READING—

Teacher: Mrs. Matland
Thirteen children took home red toy soldiers for reading five books in December. Kay Bauer received the big red bird dressed as a soldier for reading 18 books. James Pearson and Craig Maciag tied for second by reading 12. James won the toss to take home the red bookworm.

The room is decorated with penguins which are the new prize for January. Poems and stories about polar bears and penguins are being read. The children are allowed to take home an extra book for informational reading by the parent.

In creative writing stories or poems are written on polar bears, penguins or a snowman figure. They are cut out, colored and children are also trying to see who can find the most words in the word, SNOW. They write them on a snowball.

The books, "Penguin's Way" and "Negalek," "A Little Eskimo Boy" are taped for the children's enjoyment during their free day.

In January it is harder to get a free day. Besides, the other goals they must reach, they must read at least five books and learn 50 words.

Someone has said, "Reading has to be a family activity, since the average child will do what he sees people around him at home doing." So, let's all read!

THIRD GRADE—

Room 13

Teacher: Mrs. Knight
Christmas has come and gone, but there is always something to look forward to. With '76 comes our country's birthday and the third graders in our room are getting the Spirit of '76. Since our room is decorated in red, white, and blue, it gets us in the mood for learning about America.

Presently we are studying about famous Americans. Each student is choosing an American he admires or an aspect of America he is interested in and is writing a report that he shares with the class. We are learning all kinds of things we never knew before.

In social studies we are visiting the states, learning about fellow Americans and the way they live. Even math gives us Bicentennial activities and projects. Also, in math we are trying to beat the clock to see how well we know our addition facts. Recently we started learning about the metric system, and we will soon be diving into multiplication.

Children in our room with Dec. birthdays were: Gena Durgan, Rachel Schmell, and Rodney Satterthwaite.

Room 15

Teacher: Mrs. Holfka
After a busy, fun-filled Christmas vacation, we're ready to jump into January and help America celebrate its 200th birthday! We prepared ourselves in the understanding of this celebration by doing some group reports on Boston in December.

Laura Anderson, David Erskine, Andy Koszegi, Carol Nix, Joey Simon, and Jimmy Toon reported on the causes of the Boston Tea Party.

Debbie Cox, Jennifer Messman, Karen Moore, Jodi Reed, Patty

Wilber, and Tonya Yost told us of Paul Revere's famous ride to warn Americans that the British were coming.

Brian Farley, Danny Hammel, Scott Mills, Kelly Roe, and David Shoemaker described the important events of the Revolutionary War that brought forth America's independence.

Two other groups reported on two very important industries of Boston: 1. Shoe Manufacturing. Yvonne Gaken, Tami Heim, Angela Kent, Cathy Prentice and Anita Welch. 2. Lobster Fishing. Billy Ball, Mark Bentley, Jeff Leisinger, Richie Mindykowski, and Brad Peebles. Each group also created a diorama and mural report.

To give us a better picture of their Now we're finding out some other interesting historical facts. One that we were concerned about this week was how the Liberty Bell got cracked. Jimmy Toon was the first person to report to us that it first cracked while it was tolling at the funeral of Chief Justice John Marshall in 1835. It was repaired but cracked again in 1846, as it rang for George Washington's birthday. We hope to keep finding out many more facts about our country in 1976.

Room 11
Teacher: Mrs. Verrilli
Reporters: Thomas Schaff, Allan Kuhl, Patricia Hoffman, Elliot Doyle

We had a very exciting week before we went on vacation. We heard a concert by the Middle School Orchestra; we put on a Christmas sing for our parents; we had a Christmas party with presents; and then the best part came when we had our 15-day vacation.

We made dusters for our mothers out of coat hangers and rug yarn. Now we are covering jars to look like stained glass. Mrs. Verrilli has a surprise to go in them.

Our room is all decorated for the Bicentennial. There is red, white-blue everywhere. All our centers have Bicentennial things to do. One center has a Bicentennial puzzle which is a lot of fun.

MULTI-AGE ROOM—
Teacher: Miss De Vries and Mrs. Richardson
Reporter: Jane Wood

We have started 1976 with a bang! We are doing reports on Africa, Florida, reptiles, and mole-cules. We have centers on all of these topics plus one on Dictionary Skills. We are busy and happy to be back in school.

Happy Birthdays in January go to: David Settle, Phillip Sweet, Jane Wood, Kelly Hawker, Eric Inglis, Dan Klemer, Julie Koch, Laura Koepele, and Jay Marshall.

Cucumbers are another crop where Michigan stands first in the entire country. Up over 8 percent from the 1973 figures, in 1974 we produced a 115,000 ton crop of pickling cucumbers. The 1973 crop was the biggest ever, and yet 1974 beat even that record! These cucumbers with a value of \$14,488,000 were grown commercially on 29,400 acres. Main crop areas in 1974 were Bay, Gratiot, Saginaw, Sanilac and Tuscola counties.

Senior Citizens Plan Trip To 'Grand Ole Opry'

Now is the time to make plans to attend the "Grand Ole Opry" in Nashville, Tenn., and visit Louisville, Ky., and Gatlinburg, Tenn., as well.

The trip is scheduled from May 13 to 17. If enough persons are interested, the bus will pick up the travelers in Dexter.

Included in the trip will be a visit to the Shaker Village Gift shop in Lebanon, O., an evening at the horse races at Churchill Downs, Louisville, Ky., a visit to the home of Andrew Jackson and the Country Music Hall of Fame in Nashville, the Grand Ole Opry and a stop at historic Gatlinburg on the way home.

Literature is now available at 3045 Baker Rd., Dexter, or by calling 426-8179 mornings or after 6:30 p.m.

Anyone interested is invited, but reservations must be made early. The trip is being organized by the Dexter Senior Citizens.

SWEET CORN IN MICHIGAN

Michigan's commercial growing of sweet corn is found in largest quantities in the counties of Monroe, Macomb, St. Clair, Wayne and Washtenaw. Michigan's 1974 sweet corn harvest amounted to 61.7 million pounds. We ranked seventh in the U. S. with this crop valued at \$4,841,000.

Coming Soon at THE CAPTAINS TABLE
EXPANDED DINNER MENU
SERVING AFTER 5 p.m.

Including Our
ALL-NEW SALAD BAR

Remember our
Friday Night Special
SEAFOOD PLATTER
LAKE PERCH, SHRIMP, SCALLOPS
Served with potato, salad and roll

Only \$3.50

The CAPTAINS TABLE

8093 Main St., Dexter 426-3811

Open Monday thru Wednesday 6 a.m. to 9 p.m.
Thursday, Friday 6 a.m. to 10 p.m.
Saturday 7 a.m. to 9 p.m.

CLOSED SUNDAYS

Distinctive

WEDDING ANNOUNCEMENTS • INVITATIONS

INVITATIONS or ANNOUNCEMENTS . . .

Let us provide you with the very finest printed or engraved invitations and announcements. Make certain that your wedding stationery is of top quality and conforms to correct social requirements. We can advise you on these important details.

THE CHELSEA STANDARD
Social Printing Department
300 NORTH MAIN ST. PHONE 475-1371

FEED FOR PROFIT

Feed Formulas Tested, Proved To Get Results

Extra proteins, vitamins and minerals in proper balance, scientifically blended, make our feeds real profit producers for you.

Farmers' Supply Co.
Phone GR 5-5511

you can relax... Dutch Boy is on the job!

Here's the double bonus you get every time you use "Dutch Boy" Paint. First, "Dutch Boy" transforms your home with beauty—then "Dutch Boy" makes it easier to keep beautiful. "Dutch Boy" puts off repainting longer, too. That's why so many professional painters and homeowners use nothing but "Dutch Boy." Come in today and start relaxing the "Dutch Boy" way!

You will remember the quality of Dutch Boy paints long after the price is forgotten.

MERKEL Home Furnishings

Marathon Bridge Team Standings Are Announced

Marathon Bridge program standings at the end of December are as follows:

DAYTIME LEAGUE	
Team	Score
Team 5	12,070
Team 3	9,560
Team 2	8,980
Team 6	8,710
Team 9	8,640
Team 7	8,360
Team 1	8,270
Team 4	7,940
Team 10	7,450
Team 8	6,850

EVENING LEAGUE	
Team	Score
Team 17	14,480
Team 15	12,260
Team 19	11,370
Team 12	8,390
Team 13	8,130
Team 16	7,990
Team 18	7,710
Team 20	7,640
Team 11	5,190
Team 14	4,870

Kelli Marie Conlin Accepted By St. Mary's

Kelli Marie Conlin, daughter of Judge and Mrs. Patrick J. Conlin of 10725 Jerusalem Rd., has been accepted into the Class of 1980 at Saint Mary's College, Notre Dame, Ind.

Saint Mary's College, the nation's oldest legally chartered Catholic college for women, offers four-year courses in the liberal arts and sciences, leading to degrees of bachelor of arts, science, business administration, fine arts, and music. A four-year baccalaureate nursing program was re-established at the College in September 1973.

Miss Conlin is a student at St. Thomas High School, Ann Arbor.



JOAN'S BEAUTY SALON
9300 TOMA RD.
Ph. Pinckney 878-9611

BLOW DRY CUTS
NATURAL CURL
(UNIPERM)

One Second Ear-Piercing

OPEN 9 to 5
WED. thru SAT.

CARPET REBIRTH

Give your carpet a new lease on life
by cleaning it regularly.

JET SPRAY CARPET CLEANING

Use Your BankAmericard Phone 761-3025 or 475-1509
Ask for John Lixey.



Together for keeps

Now you can select matched sets and tris by Keepsake, mastercrafted in beautiful 14 kt. gold. Your Keepsake diamond is permanently registered, with perfection assured.

Keepsake

WINANS JEWELRY

YOUR AUTHORIZED KEEPSAKE DEALER

Trade Mark Reg.

New Officers Assume Duties in Rebekah Lodge

New officers resumed their chairs at the first regular meeting of the Rebekah Lodge held Tuesday, Jan. 6.

The officers were installed into their respective stations at the Dexter Harmony Lodge 460 on Jan. 5 by the Earl Gray degree team. Lodge deputy, Mrs. Mary Ann Coltre, gave the charges to Mrs. Lucille Altstaetter, chaplain; Mrs. Donna Feldkamp as financial secretary, and Miss Nadine Packard as warden at the Tuesday meeting. They were unable to attend the installation.

Mrs. Jo Hochrein reported on delivering seven boxes of home-made cookies to shut-ins and members. Mrs. Helen Harris delivered her mother's to her in Beulah.

Mrs. Nina Lehmann was elected to the three-year trustee. Continuation of the Birthday Pig Bank was voted on.

Members were reminded that 1978 dues are due and payable to Mrs. Donna Feldkamp.

Birthday celebrations were those of Mrs. Hochrein, Helen Harris and Elsie Hinz for the last part of January.

Mrs. Helen Harris and Lina Reule were the evening's committee.

The next regular meeting will be Jan. 20 at 8:30 p.m.

Beta Sigma Phi Members Report on Meadow Brook Hall

Xi Gamma Mu chapter of Beta Sigma Phi met at the home of Joan Maier on Jan. 6. The group reminisced about their Dec. 16 Christmas party, gift and cookie exchange that took place at the home of Gerry Reith. Names for Secret Sisters for 1978 were drawn. The group appreciated the appearance of Santa Claus (Bob Reibold).

Discussion included Ways and Means projects for the business year. The group decided none were needed before June.

Joan Maier, Jan Longworth and Gerry Reith presented their program which included a review of the historical Meadowbrook Hall. Three members toured the renovated building in December.

The next meeting is scheduled for Jan. 20 at the home of Louise Reibold.

Discussion included Ways and Means projects for the business year. The group decided none were needed before June.

Joan Maier, Jan Longworth and Gerry Reith presented their program which included a review of the historical Meadowbrook Hall. Three members toured the renovated building in December.

The next meeting is scheduled for Jan. 20 at the home of Louise Reibold.

It was voted to send altar Society president, Mrs. Kevin Kargel and contact chairman, Mrs. Wayne Harvey, as representatives of the society. Also approved was a contribution to the Church Women United and a request for a donation toward Christmas decoration for the Veterans' Hospital in Ann Arbor.

Games were played at the close of the meeting. Refreshments were served by Mrs. Marjorie LaRose and her committee.

Feb. 2 is the date of next meeting. Slides will be shown by Mrs. Leon Chapman after the regular business meeting.

Games were played at the close of the meeting. Refreshments were served by Mrs. Marjorie LaRose and her committee.

Feb. 2 is the date of next meeting. Slides will be shown by Mrs. Leon Chapman after the regular business meeting.

Games were played at the close of the meeting. Refreshments were served by Mrs. Marjorie LaRose and her committee.

Feb. 2 is the date of next meeting. Slides will be shown by Mrs. Leon Chapman after the regular business meeting.

Games were played at the close of the meeting. Refreshments were served by Mrs. Marjorie LaRose and her committee.

Feb. 2 is the date of next meeting. Slides will be shown by Mrs. Leon Chapman after the regular business meeting.

Games were played at the close of the meeting. Refreshments were served by Mrs. Marjorie LaRose and her committee.

Feb. 2 is the date of next meeting. Slides will be shown by Mrs. Leon Chapman after the regular business meeting.

Games were played at the close of the meeting. Refreshments were served by Mrs. Marjorie LaRose and her committee.

Feb. 2 is the date of next meeting. Slides will be shown by Mrs. Leon Chapman after the regular business meeting.

Games were played at the close of the meeting. Refreshments were served by Mrs. Marjorie LaRose and her committee.

Feb. 2 is the date of next meeting. Slides will be shown by Mrs. Leon Chapman after the regular business meeting.

Games were played at the close of the meeting. Refreshments were served by Mrs. Marjorie LaRose and her committee.

Feb. 2 is the date of next meeting. Slides will be shown by Mrs. Leon Chapman after the regular business meeting.

Games were played at the close of the meeting. Refreshments were served by Mrs. Marjorie LaRose and her committee.

Feb. 2 is the date of next meeting. Slides will be shown by Mrs. Leon Chapman after the regular business meeting.

Games were played at the close of the meeting. Refreshments were served by Mrs. Marjorie LaRose and her committee.

Feb. 2 is the date of next meeting. Slides will be shown by Mrs. Leon Chapman after the regular business meeting.

Games were played at the close of the meeting. Refreshments were served by Mrs. Marjorie LaRose and her committee.

Feb. 2 is the date of next meeting. Slides will be shown by Mrs. Leon Chapman after the regular business meeting.

Games were played at the close of the meeting. Refreshments were served by Mrs. Marjorie LaRose and her committee.

Feb. 2 is the date of next meeting. Slides will be shown by Mrs. Leon Chapman after the regular business meeting.

Letters to the Editor

Dear Editor,

The Washtenaw County Chapter of the American Red Cross would like to say "Thank You" to the residents of Chelsea for their successful blood clinic on Dec. 20, 1976. You are super people!

As you probably know, southeastern Michigan is the largest metropolitan area in the nation to depend entirely upon volunteers to meet its blood needs. This all-volunteer system means safer and more efficient blood use in area hospitals. The five counties in southeastern Michigan, Washtenaw, Wayne, Oakland, Macomb, and St. Clair, must collect 1,000 pints of blood a day to furnish area hospitals with total blood service. The burden of providing this needed blood rests upon the community. The Dec. 20 blood clinic proved that the Chelsea community is willing and able to meet the need for blood.

Because of the great need for blood, we are presently working towards having two clinics a year in Chelsea. We are confident that when plans are formulated, both drives will be successful because of your genuine concern for human life.

Sincerely,
Cornelia Fry,
Blood Director.

The next regular meeting will be Jan. 20 at 8:30 p.m.

The next regular meeting will be Jan. 20 at 8:30 p.m.

The next regular meeting will be Jan. 20 at 8:30 p.m.

The next regular meeting will be Jan. 20 at 8:30 p.m.

The next regular meeting will be Jan. 20 at 8:30 p.m.

The next regular meeting will be Jan. 20 at 8:30 p.m.

The next regular meeting will be Jan. 20 at 8:30 p.m.

The next regular meeting will be Jan. 20 at 8:30 p.m.

The next regular meeting will be Jan. 20 at 8:30 p.m.

The next regular meeting will be Jan. 20 at 8:30 p.m.

The next regular meeting will be Jan. 20 at 8:30 p.m.

The next regular meeting will be Jan. 20 at 8:30 p.m.

The next regular meeting will be Jan. 20 at 8:30 p.m.

The next regular meeting will be Jan. 20 at 8:30 p.m.

The next regular meeting will be Jan. 20 at 8:30 p.m.

The next regular meeting will be Jan. 20 at 8:30 p.m.

The next regular meeting will be Jan. 20 at 8:30 p.m.

The next regular meeting will be Jan. 20 at 8:30 p.m.

The next regular meeting will be Jan. 20 at 8:30 p.m.

The next regular meeting will be Jan. 20 at 8:30 p.m.

The next regular meeting will be Jan. 20 at 8:30 p.m.

The next regular meeting will be Jan. 20 at 8:30 p.m.

The next regular meeting will be Jan. 20 at 8:30 p.m.

The next regular meeting will be Jan. 20 at 8:30 p.m.

The next regular meeting will be Jan. 20 at 8:30 p.m.

The next regular meeting will be Jan. 20 at 8:30 p.m.

The next regular meeting will be Jan. 20 at 8:30 p.m.

The next regular meeting will be Jan. 20 at 8:30 p.m.

The next regular meeting will be Jan. 20 at 8:30 p.m.

The next regular meeting will be Jan. 20 at 8:30 p.m.

The next regular meeting will be Jan. 20 at 8:30 p.m.

The next regular meeting will be Jan. 20 at 8:30 p.m.

The next regular meeting will be Jan. 20 at 8:30 p.m.

CHELSEA VILLAGE COUNCIL PROCEEDINGS

January 8, 1978

Regular Session.

This meeting was called to order at 7:30 p.m. by President Pennington.

Present: President Pennington, Administrator Weber, and Clerk Neumeier.

Trustees Present: Borton, Dmoch, Galbraith, Johnson, Rowe and Wood.

Others Present: Zoning Inspector Judson Goltra, Police Chief George Maranuck, Civil Defense Director William Wade, and Fred Barkley.

The minutes of the December 16, 1976 meeting were read and approved.

Police Chief Maranuck submitted the police report for December. The Chief discussed with the Council two ordinances now being prepared for consideration.

Motion by Wood, supported by Johnson, to adopt a resolution authorizing the filing of an application for Land and Water Conservation Fund Assistance with the DNR for a recreational development grant, to specify the project representative as Thomas Dmoch and to sign the application. Roll call: Yeas all. Motion carried.

Motion by Galbraith, supported by Johnson, to set the next regular council meeting for a public meeting to present plans for obtaining Federal Land and Water Conservation Funds from the State of Michigan for the development of a public outdoor recreation site to be located on Old US-12 west of the fairgrounds. Roll call: Yeas all. Motion carried.

The following bids have been received for the addressograph and graphotype machines thus far: Judson Formprint, Inc., The Chelsea Standard. No action was taken at this time.

Motion by Galbraith, supported by Johnson, to appoint Trustee Dmoch as the Legislative Coordinator for the 1978 legislative season. Roll call: Yeas all. Motion carried.

Administrator Weber discussed the budget report with the council.

Motion by Wood, supported by Galbraith, to amend the 1975-76 Budget to read as follows:

Account No. 101-713-330 \$ 3,500.00
Total Park Maintenance \$17,000.00
Account No. 101-810-969 \$17,067.00
Total Other Functions \$31,742.00
Roll call: Yeas all. Motion carried.

Motion by Dmoch, supported by Borton, to conduct regular village council meetings the first and third Tuesday of each month at 7:30 p.m. in the Council Chambers. Roll call: Yeas all. Motion carried.

A letter was received from Mrs. Leon Chapman thanking the council for acting on her request to build a fence between her property and Veteran's Park.

A discussion was held with Fred Barkley regarding the "Population and Dwelling Unit Forecasts" which will become part of the General Development Plan of the village. The council gave consent to use the growth figures contained within the report.

Administrator Weber reported on inequities of landfill fees. This problem will be studied later.

Motion by Wood, supported by Galbraith, to amend the 1975-76 Budget to read as follows:

Account No. 101-713-330 \$ 3,500.00
Total Park Maintenance \$17,000.00
Account No. 101-810-969 \$17,067.00
Total Other Functions \$31,742.00
Roll call: Yeas all. Motion carried.

Motion by Dmoch, supported by Borton, to conduct regular village council meetings the first and third Tuesday of each month at 7:30 p.m. in the Council Chambers. Roll call: Yeas all. Motion carried.

A letter was received from Mrs. Leon Chapman thanking the council for acting on her request to build a fence between her property and Veteran's Park.

A discussion was held with Fred Barkley regarding the "Population and Dwelling Unit Forecasts" which will become part of the General Development Plan of the village. The council gave consent to use the growth figures contained within the report.

Administrator Weber reported on inequities of landfill fees. This problem will be studied later.

Motion by Wood, supported by Galbraith, to amend the 1975-76 Budget to read as follows:

Account No. 101-713-330 \$ 3,500.00
Total Park Maintenance \$17,000.00
Account No. 101-810-969 \$17,067.00
Total Other Functions \$31,742.00
Roll call: Yeas all. Motion carried.

Motion by Dmoch, supported by Borton, to conduct regular village council meetings the first and third Tuesday of each month at 7:30 p.m. in the Council Chambers. Roll call: Yeas all. Motion carried.

A letter was received from Mrs. Leon Chapman thanking the council for acting on her request to build a fence between her property and Veteran's Park.

A discussion was held with Fred Barkley regarding the "Population and Dwelling Unit Forecasts" which will become part of the General Development Plan of the village. The council gave consent to use the growth figures contained within the report.

Administrator Weber reported on inequities of landfill fees. This problem will be studied later.

Motion by Wood, supported by Galbraith, to amend the 1975-76 Budget to read as follows:

Account No. 101-713-330 \$ 3,500.00
Total Park Maintenance \$17,000.00
Account No. 101-810-969 \$17,067.00
Total Other Functions \$31,742.00
Roll call: Yeas all. Motion carried.

Motion by Dmoch, supported by Borton, to conduct regular village council meetings the first and third Tuesday of each month at 7:30 p.m. in the Council Chambers. Roll call: Yeas all. Motion carried.

A letter was received from Mrs. Leon Chapman thanking the council for acting on her request to build a fence between her property and Veteran's Park.

A discussion was held with Fred Barkley regarding the "Population and Dwelling Unit Forecasts" which will become part of the General Development Plan of the village. The council gave consent to use the growth figures contained within the report.

Administrator Weber reported on inequities of landfill fees. This problem will be studied later.

Motion by Wood, supported by Galbraith, to amend the 1975-76 Budget to read as follows:

Account No. 101-713-330 \$ 3,500.00
Total Park Maintenance \$17,000.00
Account No. 101-810-969 \$17,067.00
Total Other Functions \$31,742.00
Roll call: Yeas all. Motion carried.

Motion by Dmoch, supported by Borton, to conduct regular village council meetings the first and third Tuesday of each month at 7:30 p.m. in the Council Chambers. Roll call: Yeas all. Motion carried.

A letter was received from Mrs. Leon Chapman thanking the council for acting on her request to build a fence between her property and Veteran's Park.

A discussion was held with Fred Barkley regarding the "Population and Dwelling Unit Forecasts" which will become part of the General Development Plan of the village. The council gave consent to use the growth figures contained within the report.

Administrator Weber reported on inequities of landfill fees. This problem will be studied later.

Motion by Wood, supported by Galbraith, to amend the 1975-76 Budget to read as follows:

Account No. 101-713-330 \$ 3,500.00
Total Park Maintenance \$17,000.00
Account No. 101-810-969 \$17,067.00
Total Other Functions \$31,742.00
Roll call: Yeas all. Motion carried.

The Chelsea Standard, Thursday, January 15, 1978 5

Special Program for Small Farm Operators

Producers engaged in part-time or small farm operations will have their day during Michigan State University's Farmers' Week, March 22-26.

Wednesday, March 24 contains sessions on cropping practices, machinery programs, financial management, building facilities and livestock enterprises, geared specifically to their needs.

The day's activities are an addition to the regular Farmers' Week format. "Development of the day's educational topics are in response to numerous inquiries for this type

Various committee reports were given.

Motion by Galbraith, supported by Johnson, to authorize payment of bills as submitted. Roll call: Yeas all. Motion carried.

Motion by Borton, supported by Rowe, to adjourn. Roll call: Yeas all. Motion carried. Meeting adjourned.

Thomas Neumeier,
Village Clerk
Village of Chelsea.

Magic Mirror Beauty Salon

Open Tuesday thru Friday
9 a.m. to 9 p.m.
Saturday, 8 a.m. to 3 p.m.

PHONE 665-0816

Sign Up for Our Needlework Classes

BASIC CROCHET, 7 weeks	Cost \$10.00
BASIC NEEDLEPOINT, 6 weeks, supplies included	Cost \$21.00
BARGELLO, 7 weeks, supplies included	Cost \$27.00
BASIC MACRAME, 6 weeks, supplies included	Cost \$18.00
BASIC CREWEL, 6 weeks, supplies included	Cost \$18.00



ALL CLASSES BEGIN WEEK OF JAN. 19

FOR MORE INFORMATION CALL

TAILFEATHER CREATIONS

103 N. Main, Chelsea Phone 475-2512

BIG SAVINGS at DANCER'S

JANUARY CLEARANCE
STARTS TODAY, THURSDAY, JAN. 8th

MEN'S & BOYS'	WOMEN'S
WINTER JACKETS	WINTER COATS
LONG-SLEEVE SHIRTS	SKIRTS and SLACKS
DACRON QUILTED VESTS	SWEATERS - BLOUSES
UNDERWEAR - CAPS - HATS	KNIT TOPS - GOWNS - PJ's
1/3 OFF	1/3 OFF
SNOWMOBILE SUITS	DRESSES
HUNTING COVERALLS	and
FLANNEL PJ's and ROBES	PANT SUITS
1/4 OFF	1/2 OFF

INFANTS' and GIRLS'
SNOW SUITS - JACKETS - COATS
SNOW PANTS - ROBES - JACKETS
SLACKS - SLACK SETS - KNIT TOPS
1/3 OFF

MEN'S - BOYS' - WOMEN'S - GIRLS'
SNOW BOOTS - 25% OFF
Your BankAmericard and Master Charge Welcome

GIANT JANUARY WHITE SALE
25% OFF on Entire Stock of
BLANKETS - SHEETS - PILLOW CASES
TOWELS AND MUCH MORE
Reg. \$8⁹⁹ Values NOW \$6⁷⁴ Reg. \$19⁹⁹ Values NOW \$14⁹⁹
PLUS - CHOICE SHEETS at 50% OFF

Under New Ownership

Carolyn Helfrich

HOUSE OF ORIENT BEAUTY SALON

Community Calendar

Huron Valley Mother of Twins Club, Monday, Jan. 19, 8 p.m., St. Francis church library, 2250 E. Stadium Blvd., Ann Arbor. Speaker, Dr. Jackie Hoopes of Mt. Sinai Hospital; topic, Drug Abuse. For further information, phone Karen Koch at 475-2374.

Lima Center Extension Study Group, Jan. 14. All attend the lesson at Briarwood, "Listening" at 10 a.m., "Thinking" at 1 p.m. Lunch on your own.

Sharon Township Board meets tonight, Thursday, Jan. 15, at 8:30 p.m., at the township hall, Pleasant Lake Rd. Public invited.

Association of Adoption of Special Kids (AASK), general meeting 7:30 p.m., Jan. 15, High Point Center, 1819 S. Wagner Rd., Ann Arbor.

Rogers Corners Study Group Jan. 20, 8 p.m., at the home of Martha Powers.

Special Bicentennial Dance at Stockbridge American Legion Hall, Jan. 17, 9 p.m. to 1 a.m. adv31

Waterloo Village United Methodist church will show "The Rap," Jan. 23 at 7 p.m. at the church. The public is invited to attend.

Past Matrons of Olive Chapter No. 108 OES, pot-luck lunch, Thursday, Jan. 15, at 12:30 p.m., home of Doris Smith.

Lecture-discussion on alcoholism weekly, Thursdays at 7:30 p.m. Chelsea Community Hospital. Sponsored by the hospital's alcoholism therapy program and the Washtenaw Council on Alcoholism. Further information phone Carl Asher at 475-1311 or Donna Caswell at 971-7900. Public invited.

Lima Township Board meets the first Monday of every month at the Lima Township Hall, 11452 Jackson Rd., at 8 p.m.

Tours of Chelsea Community Hospital and surgical center are available for small groups. To arrange for tours, call: Neva Jordan, 426-8027, or Dorothy Miller 475-8020.

Annual banquet Olive Lodge No. 156 F&AM Saturday, Jan. 17 St. Paul's church. Dinner at 7 p.m. Masons and friends invited. Reservations by Jan. 12 with Don Dancer, phone 475-7683.

The Bookmobile from the Washtenaw County Library will stop weekly on Wednesdays from 4:15 to 4:45 p.m. at the North Lake Methodist church. From 5 p.m. to 5:30 p.m. Wednesdays, the bookmobile will be at the Cavanaugh Lake Store.

McKune Memorial Library Children's Story hour will resume Jan. 7 from 9:30 a.m. to 10:30 a.m. every Wednesday for children three and four years old.

Pap tests are free for all area women, Tuesday mornings, at St. Joseph Mercy Hospital, Ann Arbor. Call American Cancer Society office, 668-8857 for appointment.

Lyndon Township Planning Commission meets the second Thursday of the month at the Town Hall at 8 p.m.

Chelsea Co-op Nursery applications for 1975-76 classes are now being taken. For information, call Jearl Mull, 426-8822 or Leslie Bowers, 475-1401. adv21

Humane Society of Huron Valley has dogs and cats for adoption. Owners may reclaim their lost pets. Phone 662-5535. Open from 9 a.m. to 5 p.m. daily; Sunday, 1 p.m. to 5 p.m. 100 Cherry Hill Rd., quarter-mile south of Plymouth Rd. at Dixboro.

TOPS (Take Off Pounds Sensibly) is back in Chelsea. Come join us. What can you lose, but unwanted pounds. For information call 475-8139 or 475-8905.

Lyndon Township Board meets the third Thursday of the month at the Town Hall at 7 p.m.

Inquiries regarding the Chelsea blood bank may be directed to Harold Jones in the event that Mrs. Dudley Holmes is unavailable, or to Robert Meyer, American Red Cross in Ann Arbor, 971-5300.

Sylvan Township Board meeting the first Tuesday of the month, at 7 p.m., at Sylvan Township Hall.

Chelsea Jaycees first Tuesday of every month. Board meeting, fourth Tuesday of every month at Chelsea Lanes. Meetings begin at 7:30 p.m., guests are welcome.

Lamaze Association of Ann Arbor is now holding classes at the Chelsea Community Hospital. If interested, call 761-4402, or 475-9316.

American Legion and Auxiliary hospital equipment available by calling Guy Freysinger at 475-1961.

Chelsea Home Meal Service delivers one hot meal a day to elderly and disabled living in the Chelsea area. For information call 475-8014 or 475-2923.

AA and Al-Anon meeting, Monday evenings at Chelsea Hospital, 8:30 p.m. Closed meetings.

It's always easy to stand on the sidelines and criticize the players and managers.

Kiwanis Club Offers Help on Tax Refunds

Chelsea Kiwanians are offering their services to help complete homestead property tax refund forms to Chelsea area senior citizens (those age 65 and over), disabled veterans and paraplegics.

Wallace Wood, committee chairman for the Kiwanis Club said, "The forms completed in 1975 brought several thousands of dollars back to Chelsea claimants."

In order to claim a refund, certain information will be needed, such as property tax statements or receipts for the summer and winter taxes, the amount of income for the household, including social security income, disability and pension benefits, rental income, investment income and any other income. Wood added, "It is well to note that you do not have to own property. Those renting property can also be eligible for a refund based on the amount of rent paid."

Kiwanis Club members will provide assistance beginning at 7:45 p.m. after their regular meetings on Jan. 19 and 26 at the Fair Service building. Wood remarked that the Kiwanians hope a large number of people will take advantage of the free service the Kiwanians are offering.

Parents Group Studies Need, Objectives

Despite the heavy snowfall, the parents and teachers group of Chelsea held its first meeting at South School on Tuesday, Jan. 13. A total of 23 parents and teachers braved the inclement weather to attend.

The meeting was chaired by John Cox who explained the purpose of the meeting and the objectives of the group. The purpose was to determine the need of an organization of this type and if the parents and teachers of the community would actively support it.

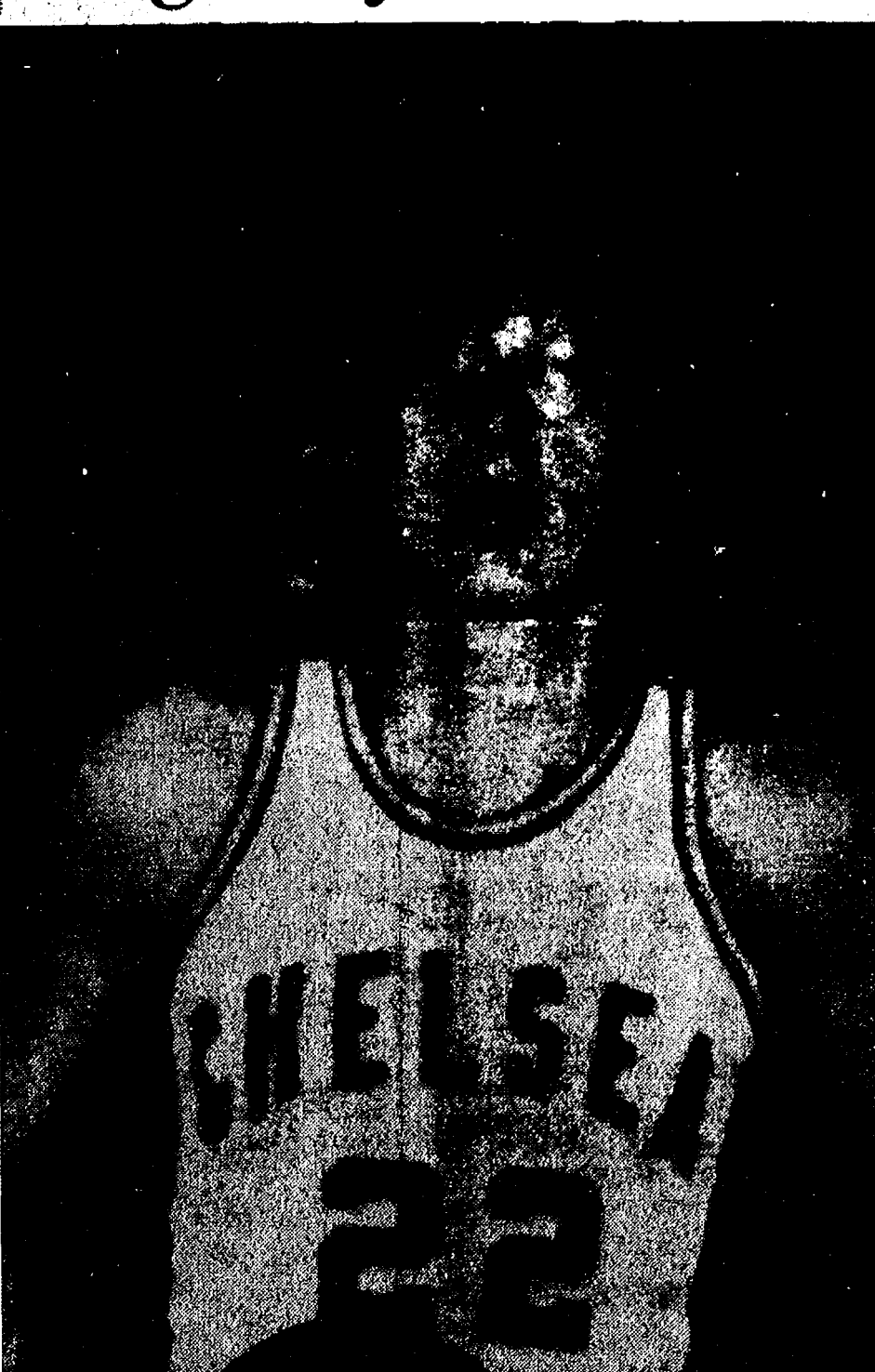
The main objectives of the group are to establish a communication link and a working relationship between parents and school officials. Cox made it clear that it was not a complaint session. He further stated "I do not want the meetings to be a battle ground, but hopefully a time when parents and teachers could get together and work on problems, which if solved, would improve our schools and the education of our children."

Recommendations and questions were presented to the group by Cox. After a short discussion, it was decided to defer any action on these items until the next meeting; the reason being the insufficient representation at this one.

The meeting was adjourned at 7:45 p.m. The next meeting is scheduled for Thursday, Jan. 22, at 7 p.m. at South School. Parents and teachers from all four Chelsea schools are invited to attend.

Now is the time to mail Christmas packages to distant relatives if you want to make sure they will arrive before the holiday.

Cager of the Week



MIKE TOBIN (22): One would think that Mike Tobin's stance of 6'8" would enable him to merely drop the basketball into the basket. Unfortunately that is not entirely the case, though Mike admits that his height is a definite advantage. "It makes up for the other things I can't do well," he added. Tobin who is a senior and in his first year as a member of the varsity team, says he has no doubt that things will pick up for the Bulldogs. "We haven't been playing as a team, and once we begin to play together we will pick up." Mike, who plays center with the Bulldogs, says that he has been playing basketball ever since he can remember. The son of Mr. and Mrs. Martin Tobin of 176 E. Summit, Mike has two younger brothers, Matt and Chris.

Mothers March County Chairpersons Announced

"M" is for the many hundreds of generous, energetic and ingenious volunteers who plan and carry out the annual Washtenaw County March of Dimes Mothers March.

Beginning Saturday and continuing throughout the county soliciting contributions as part of the Mothers March, traditionally the largest single source of funding for research, medical service, and professional and public health education, all directed at overcoming the nation's most severe child health problem. Only through more research into the causes of high-risk pregnancies and improved prenatal care of mothers and infants can we hope to make progress in this area.

Persons interested in volunteering to march may call campaign headquarters at 761-6331.

Any speaker, or writer, who pleases everyone has almost certainly said nothing of importance.

of Washtenaw county Mothers March are: Ann Arbor, Evelyn Sells, Sheila Burrell, Nancy Darnell, Carol Coby and Betty Henry; Chelsea, Pat Whitesall, Jan Granier and Kathy Frisinger; Manchester, Alice Rossette, Sue Fielder and Mary Ann Chelmin; Saline, Kay Traver, Sue Rushlow, Barbara Marion, Sonya Lyndon, Pam Losee and Sue Boswell; Milan, Norma Smith; Dexter, Muriel Klump; Brighton and Whitmore Lake, Dorothy Mead; and Ypsilanti, Linda Crabtree, Mary Burley and Karen Walker.

Persons interested in volunteering to march may call campaign headquarters at 761-6331.

Any speaker, or writer, who pleases everyone has almost certainly said nothing of importance.

JV Cagers Squeak Past Dexter, 57-56

Chris Smyth put in two free throw shots with less than one minute to go last Saturday evening when the Junior Varsity Bulldogs met Dexter for a 57-56 victory. Smyth's success left the Dreadnaughts with three seconds remaining; time enough to miss a shot that would have spoiled the Chelsea victory.

Coach Paul Tertstra remarked, "The Bulldogs played well, especially the substitutes."

Chelsea had three starters in foul trouble during the game. John Daniels, Joe Ewald and Jeff Rudd came off the bench to play key roles in the victory.

High scorer for the Bulldogs was Randy Harris with 18. Rod Sweeney put in 12, while John Daniels had eight and Mark Feeney had seven. Putting in four points and dragging down 16 rebounds was Dave Schrotenboer. Other Chelsea scorers were Chris Smyth with four and Joe Ewald and Jeff Rudd with two each.

The JV's now hold a league record of 4-2 and a season record of 5-5. Tomorrow, Friday, they will travel to Saline for perhaps their toughest competition of the season.

VFW Essay Contest Winner Announced

A regular business meeting of the Ladies Auxiliary, Veterans of Foreign Wars, Unit 4076, was held Monday evening, Jan. 12 with 13 members attending. Tapes were played of the three winning Voice of Democracy essays held among the students of the local high school. The winning essay will go on to be judged at the district level. The Auxiliary and the Post sincerely hope the essay from Chelsea will remain in competition and reach the department judging. Ellen Straub is the local winner.

It was announced that the Sixth District will meet Feb. 8 at Hanover-Horton Post. An open meeting will be held by the post on Jan. 29 with a representative from the V.A. Hospital in Ann Arbor. Carl Heldt will speak on the workings of the facility.

The following were appointed as a visiting committee: Sandi Ellenwood, Eulahlee Packard, Mary Kniss and Dorothy Lentz. The audit report was given by Sandi Ellenwood and the report of the weekly bingo was given by Norma Seyfried. Comments on the newsletter recently started were very favorable. Everyone present remarked that they appreciated receiving it. One dollar was allowed for a gift for Department president, Faye Walter, who will make her official visit to District Six on Feb. 8.

The group allowed \$300 for Auxiliary cancer insurance. All members will be covered under this insurance.

An American flag was sent by the national organization as a "Happy Birthday" Bicentennial gift for the auxiliary and was presented by the Americanism chairman, Eulahlee Packard.

D. Welshans Becomes Junior Member of Hereford Association

Douglas Welshans, a senior at Chelsea High school, recently has become a junior member of the American Polled Hereford Association, according to an announcement from the beef breed's national headquarters in Kansas City, Mo.

Junior memberships have been given to thousands of boys and girls in every state in the nation by the American Polled Hereford Association, entitling them to reduced fees and certain privileges the same as adult members.

Douglas is the son of Mr. and Mrs. Raymond C. Welshans, Jr., of North Territorial Rd.

Gary Foster Takes Lead in Miami Fishing Tourney

Gary Douglas Foster of 118 Pierce St. took the lead last week in the Metropolitan South Florida Fishing Tournament when he caught a 40-pound Amberjack in the 20-pound division.

He caught the fish at Big Pine Shoal. He will be awarded a citation at the end of the tournament.

The tournament is being held in Miami.

Through fiscal year 1975, the federal government had spent a total of \$239 billion on benefits programs for veterans of all wars.

SHELVES

SHELVES

SHELVES

SHELVES

SHELVES

SHELVES

SHELVES

"THE FRIENDLY ONE" HAS A WORLD OF SHELVES TO CHOOSE FROM

—DIFFERENT STYLES, SIZES, SHAPES & FINISHES

THEY ALL GO UP EASILY

THEY'RE ALWAYS PRICED RIGHT — AT CHELSEA LUMBER



★ 1 1/4" THICK "FANCY EDGE" SHELVES

10"x24"	\$ 5.29	SCULPTURED
10"x36"	\$ 7.89	SUPPORT BRACKETS
10"x48"	\$10.55	\$4.75 pair
10"x60"	\$13.15	Affix bracket to wall,
10"x72"	\$15.79	fasten shelf to bracket.

★ 1 1/4" THICK "OLD WORLD" SHELVES

10"x24"	\$ 4.79	DISTRESSED PINE
10"x36"	\$ 7.19	CONTOURED BRACKETS
10"x48"	\$ 9.59	—from \$3.89 pr.
10"x60"	\$11.98	Brackets for
10"x72"	\$15.29	1, 2 & 3 Shelf
		Installation

TROPHY SHELF \$7.98 - CORNER SHELF \$7.98

★ K-V METAL WALL STANDARDS AND SHELF ARMS

Stocked in brushed chrome, white, yellow, orange, olive, black, antique brass & antique copper.

—WALL STANDARDS 24" to 72"

—SHELF ARMS 6" to 12"

★ 3/4" THICK PRE-FINISHED WALNUTONE SHELF BOARDS

8x36	\$2.45	10x36	\$3.09	12x36	\$3.69
8x48	\$3.29	10x48	\$4.09	12x48	\$4.89
8x60	\$3.98	10x60	\$5.09	12x60	\$6.15

(Other sizes in stock)

★ K-V WALL-RECESS and LINEN CLOSET ADJUSTABLE STANDARDS and SHELF CLIPS

STANDARDS 2', 3' 4', 5' & 6' LONG

★ ORNAMENTAL STEEL BRACKETS IN ANTIQUE BRONZE OR BLACK

3"x4"	\$2.29	6"x8"	\$4.38
4 1/2"x6"	\$2.69	7 1/2"x10"	\$5.98

(Prices shown are for black - per pr.)

- at the "HOME CENTER"

CHELSEA LUMBER

\$300⁰⁰ ALLOWANCE

FOR ANY CAR!! \$300.00 ALLOWANCE Regardless of Age, Make or Model. If need be, we will even tow. This is the minimum. Hundreds more depending on year and condition.

SALE STARTS 8:30 a.m., JANUARY 15th 1976

'75 LTD WAGON\$4995 Minimum Allowance 300 \$4695	'74 FORD LTD\$2995 Minimum Allowance 300 \$2695	'72 MONTE CARLO\$2495 Minimum Allowance 300 \$2195	'70 PLYMOUTH DUSTER\$1295 Minimum Allowance 300 \$995
'75 MUSTANG\$4095 Minimum Allowance 300 \$3795	'73 THUNDERBIRD\$3995 Minimum Allowance 300 \$3695	'72 PLYMOUTH\$1595 Minimum Allowance 300 \$1295	'70 OLDSMOBILE\$1295 Minimum Allowance 300 \$995
'74 MUSTANG\$2895 Minimum Allowance 300 \$2595			'70 FORD RANCHERO\$1495 Minimum Allowance 300 \$1195
'74 PINTO\$2895 Minimum Allowance 300 \$2595			'70 FORD SQUIRE WAGON\$1195 Minimum Allowance 300 \$895
'74 FORD 1/2-TON PICK-UP\$2995 Minimum Allowance 300 \$2695			'69 MUSTANG\$1295 Minimum Allowance 300 \$995
'74 ECONOLINE VAN\$3295 Minimum Allowance 300 \$2995			'54 FORD 1/2-TON PICK-UP\$395 Minimum Allowance 300 \$95



LYLE CHRISWELL



JOHN POPOVICH



RON SCHUYLER



BOB BORTELL

PALMER

CHELSEA

Only 15 Minutes from Ann Arbor
Open Mon. thru Fri. 8:30 a.m. til 9:00 p.m., Sat. til 4:00 p.m.



475-1301

The Happyface Place®

We're in business to make you smile

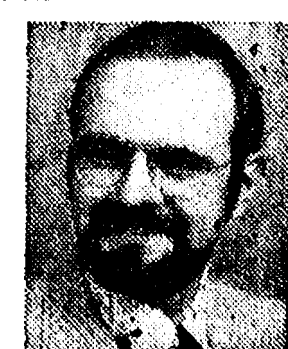
In Chelsea for 63 Years - Since April 1912

BIRTHS

A son, Jonathan Scott, Dec. 28, at St. Joseph Mercy Hospital, Ann Arbor, to Mr. and Mrs. Douglas Cronkite of 6345 1/2 McClure Rd. Maternal grandparents, Mr. and Mrs. Edward Wisser of Brighton. Paternal grandparents, Mr. and Mrs. Robert Cronkite of Battle Creek. Maternal great-grandmother, Mrs. Wisser of Howell. Paternal great-grandmother, Mrs. Andridge of Battle Creek.

You and Your FARM

... one of the reasons we're in business. The first with a Farm-owners policy, the first with Agropol, the first with an environmental protection endorsement. All at a fair price. Check the facts



DAVE ROWE

107 1/2 S. Main
Ph. 475-8065

FARM BUREAU
INSURANCE
GROUP, Inc.

200 Years Ago This Month

By Professor Robert E. Brown
Department of History
Michigan State University

"In the following pages I offer nothing more than simple facts, plain arguments, and common sense."

"The sun never shined on a cause of greater worth. 'Tis not the affair of a City, a County, a Province, or a Kingdom; but of a Continent — of at least one-eighth part of the habitable Globe. 'Tis not the concern of a day, a year, or an age; posterity are virtually involved in the contest, and will be more or less affected even to the end of time."

With these stirring words in January 1776, an anonymous pamphleteer, later identified as the transplanted Englishman Tom Paine, rang the changes on a thought that had been uppermost in men's minds for many months and had lurked in the background for many years — American independence.

The idea was not exactly new. For more than a century British officials had suspected that every American effort to thwart mercantile and imperial policies was designed for eventual independence. The comparison was often made between a fruit tree and the British Empire: when fruit ripened it dropped from the parent tree; and when colonies became able, they broke off from the Mother Country. British measures after 1760 were expected to prevent the

ripening, to keep it firmly attached to the tree. What was new in January 1776 was the possibility that the idea of independence could now become a reality.

Paine's pamphlet, bearing the title *Common Sense*, explained in forceful language why Americans

would be better off outside than inside the British Empire. The arguments were many. American should abandon the idea of reconciliation, which was neither desirable nor possible, and embrace independence, which was both.

Economically, an independent America would flourish in world trade without British mercantilist shackles. Militarily, Americans could defend themselves and would no longer be dragged into Britain's imperial wars.

Britain was not a Mother Country deserving the loyalty of her offspring, for "even brutes do not devour their young, nor savages make war upon their families" as Britain was doing to her American colonies. Furthermore, Europe, not England, was the real mother of America, for persecuted lovers of civil and religious liberty had come here from every part of Europe to find a haven.

It was absurd to believe that an island should rule a continent, and regardless of promises, Britain was determined to subordinate her American colonists to an intolerable position in the Empire. To Paine, the obvious answer was independence.

Closing with an appeal for all lovers of liberty to stand up and be counted at a time when freedom was being hunted down and destroyed around the world, Tom Paine's *Common Sense* was without doubt the big event two hundred years ago this month.

More than 55 percent of all money spent by the Veterans Administration on procurement in fiscal year 1975 went to small business firms.

The Rev. and Mrs. Richard Courty of Clinton, will minister at the First Assembly of God, 14900 Old US-12 E. Sunday, Jan. 18, in both the 11 a.m. and 6 p.m. services, according to the pastor, the Rev. T. B. Thodeson.

The Rev. Thodeson has resigned and will be going into specialized areas of ministry and pulpit support here for six years. They have their home here and will not be changing residence. They will continue to serve until a new pastor has accepted the call.

The Courty's presently are assisting in the church at Clinton. The public is invited to meet this youthful couple to enjoy their music and message.

The public is invited to meet this youthful couple to enjoy their music and message.

The public is invited to meet this youthful couple to enjoy their music and message.

The public is invited to meet this youthful couple to enjoy their music and message.

The public is invited to meet this youthful couple to enjoy their music and message.

The public is invited to meet this youthful couple to enjoy their music and message.

The public is invited to meet this youthful couple to enjoy their music and message.

The public is invited to meet this youthful couple to enjoy their music and message.

The public is invited to meet this youthful couple to enjoy their music and message.

The public is invited to meet this youthful couple to enjoy their music and message.

ripenting, to keep it firmly attached to the tree. What was new in January 1776 was the possibility that the idea of independence could now become a reality.

Paine's pamphlet, bearing the title *Common Sense*, explained in forceful language why Americans

would be better off outside than inside the British Empire. The arguments were many. American should abandon the idea of reconciliation, which was neither desirable nor possible, and embrace independence, which was both.

Economically, an independent America would flourish in world trade without British mercantilist shackles. Militarily, Americans could defend themselves and would no longer be dragged into Britain's imperial wars.

Britain was not a Mother Country deserving the loyalty of her offspring, for "even brutes do not devour their young, nor savages make war upon their families" as Britain was doing to her American colonies. Furthermore, Europe, not England, was the real mother of America, for persecuted lovers of civil and religious liberty had come here from every part of Europe to find a haven.

It was absurd to believe that an island should rule a continent, and regardless of promises, Britain was determined to subordinate her American colonists to an intolerable position in the Empire. To Paine, the obvious answer was independence.

Closing with an appeal for all lovers of liberty to stand up and be counted at a time when freedom was being hunted down and destroyed around the world, Tom Paine's *Common Sense* was without doubt the big event two hundred years ago this month.

More than 55 percent of all money spent by the Veterans Administration on procurement in fiscal year 1975 went to small business firms.

The Rev. and Mrs. Richard Courty of Clinton, will minister at the First Assembly of God, 14900 Old US-12 E. Sunday, Jan. 18, in both the 11 a.m. and 6 p.m. services, according to the pastor, the Rev. T. B. Thodeson.

The Rev. Thodeson has resigned and will be going into specialized areas of ministry and pulpit support here for six years. They have their home here and will not be changing residence. They will continue to serve until a new pastor has accepted the call.

The Courty's presently are assisting in the church at Clinton. The public is invited to meet this youthful couple to enjoy their music and message.

The public is invited to meet this youthful couple to enjoy their music and message.

The public is invited to meet this youthful couple to enjoy their music and message.

The public is invited to meet this youthful couple to enjoy their music and message.

The public is invited to meet this youthful couple to enjoy their music and message.

The public is invited to meet this youthful couple to enjoy their music and message.

The public is invited to meet this youthful couple to enjoy their music and message.

The public is invited to meet this youthful couple to enjoy their music and message.

The public is invited to meet this youthful couple to enjoy their music and message.

The public is invited to meet this youthful couple to enjoy their music and message.

Wrestler of the Week



DENNIS BAUER: Of all the qualities necessary for a good wrestler, "desire" is perhaps the single quality that describes Dennis Bauer's outstanding wrestling career at Chelsea High school. A senior in his fourth year with the CHS wrestling team, Dennis now holds a season record of 15-0 for wrestling performances at 185 pounds. As a junior he was second in the Southeastern Conference and continued through regional, district and state competition. As a sophomore he went to the regionals and as a junior he was second to the Southeastern Conference's number one wrestler. Unavailable for comment, as he was practicing for his upcoming role as Marco in Chelsea High school's musical production of "Carnival," Mrs. Norman Bauer said she thought her son's "desire to win" had a lot to do with his 15-0 record and past records at CHS. Dennis, who is well known for his performances in football and track, has one brother, Bart (who incidentally has begun a wrestling career of his own as a freshman at the high school), and a sister, Gayla.

Homeowners Responsible For Clearing Sidewalks

"Let it snow, let it snow, let it snow." Snow is beautiful, it is fun to play in, but it is not much fun when it turns to ice or becomes so packed down, that even a short walk from the front door to the mailbox risks a broken leg, arm or hip, or at least a fall.

Remarking that he has had a number of complaints from village residents about unshoveled snow on sidewalks and driveways in the their walks of snow and ice, Meranuck said that it is the responsibility of homeowners to clear their walks of snow and ice. Meranuck added that residents are also liable for damage resulting in accidents which may occur on their property.

He continued to say that a number of children walking to school and residents who may walk to work are finding the sidewalks hazardous.

We have taken a survey of the village and have found that about half the sidewalks are not shoveled," he said.

In a village ordinance dated approved as April 15, 1896, the law states: Section 3. It shall be the duty of the owner or occupant to remove all obstructions caused by

(Continued on page 12)

CHELSEA, MICHIGAN, THURSDAY, JANUARY 15, 1976

SEC ROUND-UP:

Lincoln Rolling Along at Top of Standing With Perfect Record

Lincoln is clinging steadfastly to the top rung of the Southeastern Conference ladder for basketball, defeating now second-ranked Saline last Friday evening. Attempting to climb, but remaining at the bottom rung are Chelsea's Bulldogs. They lost to Dexter, 78-64.

Lincoln 73, Saline 65—

The Hornets did not want to give up this game to the Railsplitters last Friday evening and managed to tie the score, 50-50, early in the fourth quarter. That, however, was as close as they were able to get to the victory. Neither team played decisively and Lincoln

coach Rod Marlatt commented that the home court advantage may have had something to do with the win. Johann Barbour led Lincoln with 21 points while Mike Williams got 16 and Don Waltz came off the bench for 11. Scoring for Saline were Tom Mitchell and Mike McGuire, each putting in 17 points.

Milan 53, Novi 49—

The Wildcats incurred another loss Friday evening when Milan's Big Reds edged them out for a 55-49 victory. Three Milan players, Kurt Dingman, Eric Wurster and Al Tallas tripped their scores with 17 each to put the victory in Mi-

lin's record book. The game was neck and neck until the second half when the Big Reds moved ahead by eight points. Bill Giorgio put in 19 for Novi; Scott Parsons had 16.

Brighton 77, South Lyon 53—

A hit on one out of every two shots from the field Friday evening swung an easy victory for Brighton, as they trampled South Lyon, 77-53. While the Bulldogs had a strong 50 percent in shooting, the Lions could only manage 20 percent. High scorer for Brighton was Tom Babineau with 22. Kevin Baize led South Lyon with 21.

Dexter 76, Chelsea 64—

The Bulldogs were met with another loss in the Southeastern Conference Friday evening as poor shooting and rebounding allowed Dexter's Dreadnaughts to grab a 10-point lead and never let go of it. High scorer for Dexter was Doug Gross with 18. Mark Ianni had 12 and Mark Mast scored 11. CHS star player Randy Guenther put in 19 for the losing battle, followed by 14 from Mike Tobin.

SOUTHEASTERN CONFERENCE Standings as of Jan. 12

	W	L
Lincoln	6	0
Saline	4	1
Milan	4	2
Dexter	4	2
Brighton	3	3
South Lyon	1	4
Novi	1	5
Chelsea	0	6

SCORES
Brighton 77, South Lyon 53.
Dexter 76, Chelsea 64.
Lincoln 73, Saline 65.
Milan 55, Novi 49.

Course: Patchwork and Applique

Instructor: Mary Kumpf.
8 weeks, Tuesdays, beginning Jan. 13.
Time: 7 to 9 p.m.
Place: High school Home Ec. Room.
Fee: \$10.

Course Description: Learn how to do Patchwork and Appliques on clothing, quilts, pillows, wall hanging table cloths, wreaths, etc. Bring cloth scraps, thread and scissors to the first class. To register phone 475-1571.

Course: Patchwork and Applique

Instructor: Mary Kumpf.
8 weeks, Tuesdays, beginning Jan. 13.
(Continued on page 10)

Chelsea Recreation Council is offering area residents a winter program designed to fight the winter blues.

While a number of the courses have already had their first meeting, Recreation Council director, Holly Porter, reports that openings remain in most courses and registration may be completed through the instructor.

Following is all the basic information interested residents need to know about the winter recreation program. Registration is through the course instructors whose phone numbers are listed under each course description.

Course: Introduction to Handwriting Analysis

Instructor: Tom Killea. (8 weeks, Thursdays, beginning Jan. 15.
Time: 7 to 9 p.m.
High School Room No. 118
Fee \$13 (includes study kit).

Course Description: Graphoanalysis is the study of handwriting to determine individual character and personality. The instructor, a certified graphoanalyst, will relate basic principles to everyday applications. To register call 475-9389.

Course: Typing for Personal Use.

Instructor: Carol Kvarnberg. 8 weeks, Thursdays, beginning Jan. 15.
Time: 7 to 9 p.m.
Place: High School Typing Room.
Fee: \$10.

Course Description: The course will offer beginning typing to be used for ones personal use. To register phone 475-7324.

Course: Framing

Instructor: Ben Bower. 8 weeks, Thursdays, beginning Jan. 15.
Time: 7 to 9 p.m.
Place: Beach Middle school, Shop Room.
Fee: \$10.

Course Description: Participants in this course will be designing and constructing a frame. Lectures to include the choosing of frame stock, finished or unfinished, matting material, size, color, texture best suited for the subject, building and finishing a frame and mat; cutting glass and assembling all the component parts. Material costs additional, approximately \$5 depending upon frame, stock, size, etc. To register phone 475-8261.

CLOTHING SALE
SUITS - SPORT COATS
TOPCOATS - LEISURE SUITS
20% to 50% OFF
Strieter's Men's Wear

RICK'S MARKET

20490 M-52 "The Store with the Spartan on the Door" Phone 475-2898

BORDEN'S
HOMO MILK Gal. **\$1.30**

10-OZ. NO-RETURN BOTTLES
COCA-COLA 8 pak **\$1.45**

ECKRICH
SMOKY-LINKS 10-Oz. Pkg. **89¢**

ALL BRANDS & SIZES
CIGARETTES Limit 2 Crtns. Crtn. **\$3.79**

HOT

HOME-MADE BREAD

Week Days, 3:30 p.m. Sat. & Sun., 10:30 a.m.

We Make Our Own Baked Goods - Fresh for You!

SATURDAY SPECIAL

RICK'S HOME-MADE WHITE BREAD Loaf **47¢**

(QUANTITY RIGHTS RESERVED)

American Legion Post No. 31 SUPER BOWL X SUNDAY, JAN. 18

12 NOON to ?

Hey Gals, tired of football, send your husband to the Legion!

GAMBLES

50% OFF

on
Complete Stock of 8-TRACK TAPES

All name-brand tapes.
Famous Artists.

ALL TAPES PRICED AT 1/2 PRICE

Ads
Taken
until 1 p.m.
Tuesday

Advertise the Action Way! The Want Ad Way!

Just
Phone
475-1371

WANT ADS

The Chelsea Standard

WANT AD RATES
PAID IN ADVANCE—All regular advertisements, 75 cents for 25 words or less, each insertion. Count each figure as a word. For more than 25 words add 3 cents per word for each insertion. "Blind" ads or box number ads, 35c extra per insertion.
CHARGE RATES—Same as cash in advance, with 25 cents bookkeeping charge if not paid before 1 p.m. Tuesday preceding publication. Pay in advance, send cash or stamps and save 25 cents.
DISPLAY WANT ADS—Rate, \$1.40 per column inch, single column width only. 8-point and 14-point light type only. No borders or boldface type. Minimum 1 inch.
CARDS OF THANKS or MEMORIALS—Single paragraph style, \$1.50 per insertion for 50 words or less; 3 cents per word beyond 50 words.
COPY DEADLINE—1 p.m. Tuesday week of publication.

PIANO TUNING, Chelsea and area. Facilities for reconditioning and rebuilding. Used piano sales; reconditioned grands and verticals. E. Ecklund, 426-4429. x50tf

J. R. CARRUTHERS
LICENSED
RESIDENTIAL BUILDER
CUSTOM HOMES
ADDITIONS/FIREPLACES
PATIO
ROOFING/SIDING/REPAIRS

475-7234

CHELSEA

KLINK EXCAVATING
Bulldozer - Backhoe
Road Work - Basements
Trucking - Crane Work
Top Soil - Demolition
Drainfield - Septic Tank
Trenching, 5" up

Industrial, Residential, Commercial
CALL 475-7631 x13tf

STEP UP TO
KOZMA
CONSTRUCTION

And
Step
Down
In
Price

LICENSED
BUILDER
FREE ESTIMATES
COMPLETE
CONSTRUCTION
SERVICES

CALL
LEN KOZMA
475-7452

BUILDING SPACE TO RENT —
Formerly Luke's Sporting Goods
Store, 137 Park St., Chelsea. Ph. 475-1885. x30

ICE FISHING DERBY, Euchre
Tournament, Snowmobiling and
entertainment. Jan. 31 and Feb. 1.
American Legion Post 31, Cavan-
augh Lake. x31

FOUND—Tiger cat. Owner phone
Glenn Weir, 475-7500. x32

WANT ADS

PATCHING and PLASTERING
Call 475-7489. x88tf

CLOGGED

SEWER

Reynolds Sewer
Service

We Clean Sewers Without Digging
Drains Cleaned Electrically

FREE ESTIMATES

2-YEAR GUARANTEE

Phone Ann Arbor NO 2-5277

"Sewer Cleaning Is Our Business—
Not a Side Line"

38tf

C—Custom Built Homes

O—h! We Remodel too

U—can count on us

N—o Job Too Small

T—rim Inside & Out

R—ough-In Only If

Y—ou Want to Finish

S—iding Aluminum, 5" Gutters

I—mmediate Attention

D—ALE COOK & CO.

E—stimates, Free

52tf

BUILDERS

Please Call

475-8863

DALE COOK

17tf

BOB'S LOCK & KEY

Complete Locksmithing Service

Commercial, Residential,
Automotive

Luggage locks repaired.

475-9071

41tf

GEORGE W. SWEENEY

HEATING

Licensed Contractor

Furnaces, air conditioning,
and sheet metal work.

Phone 475-1867

20tf

CAR RENTAL by the day, week,
end, week or month. Full insur-
ance coverage, low rates. Call
Lyle Christwell at Palmer Motor
Sales, 475-1301. x25tf

CUT FOOD COSTS

Grow your own fruit on Stark Bros.
trees.

Reserve stock now for spring mail
delivery.

Elson Bettner

15700 Cassidy Rd.

475-9223

15tf

FOR SALE—Baby crib, larger than
normal, also makes into youth
bed. Excellent condition, very pret-
ty; mattress and box springs in-
cluded. Ph. 475-2638. x31

WANTED—Used riding lawn mow-
er, preferably with large wheels.
Ph. 475-8310. x32

WANT ADS

HOUSE FOR SALE by owner—4-
bedroom ranch, family room, 2
baths, full basement, 3 years old.
Ph. 475-1791. x14tf

CHELSEA

SCHOOLHOUSE APARTMENTS

Applications being taken for

Building No. 2 to be open by Jan.

15. Phone R.E.T.S. Enterprises at

761-3025 or 475-1509 for further in-

formation. x25tf

LEONARD REITH

Master Plumber

Licensed Electrician

Hot Water Heat

18238 N. Territorial

Rd.

Chelsea, Mich. 48118

Phone: 475-2044

52tf

BLACK SWAMP DIRT by the ton

or yard, and backhoe work.

Drain fields, basements dug. Drive-

ways. Ph. 475-1963. x24tf

ICE FISHING DERBY, Euchre

Tournament, Snowmobiling and

entertainment. Jan. 31 and Feb. 1.

American Legion Post 31, Cavan-

augh Lake. x31

THORNTON

CHELSEA VILLAGE—4-bedroom

brick home, family room with

fireplace, 1 1/2 baths. Full basement,

attached garage. Fenced back

yard. \$51,000.

HALF MOON LAKE—2-bedroom

home on 3 acres with further de-

velopment potential. Boathouse and

heated workshop on property.

\$75,000.

14 ACRES—In Stockbridge School

District. Newer 3-bedroom ranch

with 2 1/2 baths, full basement. Barn

on property. \$49,500.

PINCKNEY SCHOOLS—Attractive

and spacious split level, custom

fireplace, huge library, finished

basement, 1 1/2 baths. Well land-

scaped. \$83,900.

4 BEDROOM—Family home. Sum-

mer house, storage shed, heated

garage. All on 2 acres in Dexter

schoools. \$38,000.

BICENTENNIAL FANS—This

beautiful old home is for you. 11

ft. ceilings, 2 fireplaces, some origi-

nal woodwork. Needs restoration.

On 10 acres just outside of Chelsea.

\$80,000.

FARM PROPERTY

100 ACRES—Rolling pasture set up

for horse or beef. Good barns.

Large comfortable 5-bedroom home

in good condition. \$90,000. Addition-

al acreage available.

ROBERT H.

THORNTON

JR., P.C.

REALTOR

CHELSEA

Deg Hamilton 475-8828

Dolly Alper 475-1870

Mark McKernan 475-8424

Bob Thornton 475-8837

31

SKI-DOO—340 F.A. excellent con-

dition. Ph. 475-7888. x31

YES

WE ARE MAKING

LONG-TERM FARM

REAL ESTATE

LOANS

SEE US

Federal

LAND BANK

Association

P. O. Box 7006

Ph. 769-2411 3645 Jackson Rd.

Ann Arbor, Mich. 48103

WANT ADS

VACUUM CLEANERS

Authorized Electrolux

sales and service.

James Cox

428-8444, or 428-8686

118 Riverside Dr., Manchester.

48tf

KNAPP SHOES

For Cushion Comfort

Robert Robbins

475-7262

48tf

FOR RENT—American Legion

Hall. \$50. Call 475-1824. x40tf

Complete

Body Repair

Service

Bumping - Painting

Windshield and Side Glass

Replacement

Free Pick-up & Delivery

Open Monday Until 9

CONTACT DON KNOLL

FOR FREE ESTIMATE

52tf

Village

Motor Sales, Inc.

IMPERIAL - CHRYSLER

DODGE - PLYMOUTH

Phone 475-8661

1185 Manchester Rd., Chelsea

Hours: 8 a.m. to 6 p.m.

Tues. thru Fri. Until 9 Monday.

9 a.m. to 1 p.m. Saturday

x14tf

Automotive

Rust Proofing

Cars and Trucks

Village

Motor Sales, Inc.

IMPERIAL - CHRYSLER

DODGE - PLYMOUTH

Phone 475-8661

1185 Manchester Rd., Chelsea

Hours: 8 a.m. to 6 p.m.

Tues. thru Fri. Until 9 Monday

9 a.m. to 1 p.m. Saturday

21tf

PLUMBING

HEATING

OR

ELECTRICAL

IN THIS NEW YEAR of 1976, what-

ever your need might be, call

HILLTOP. You'll find us always

there in all types of hazards and

problems—ready to serve you

with the best quality in workman-

ship and material at a reasonable

price.

CALL

HILLTOP PLUMBING

8316 Wexner Road

Chelsea, Mich. 48118

475-2949

33

HELP WANTED—Male or fe-

male—Supplement your in-

come. Part-time, openings in Che-

lsea, Dexter and Ann Arbor areas.

Early morning hours. Single copy

delivery. Commissions and car al-

lowance. Dependable car required.

Ph. 455-3381, 769-5185 or call col-

lect 1-483-2351. Detroit Free Press.

x32

NEED LOVING CARE for your

pre-schooler while you work

days? Meals, snacks, and a play-

mate provided, in my home. Half

moon Lake area. Ph. 475-8838. x32

FOR RENT—Portage Lake, 3-

bedroom, 3 baths. Large general

purpose room, could be used for

added bedroom. Fenced yard, 2-

car garage, lake privileges. Dexter

schoools. \$375 month. 426-4169. x31

WANT ADS

WILL BABYSIT at North Lake
7:30 a.m. to 5:30 p.m., Mon.-Fri.
Ph. 475-1282. x31

Once-A-Year Sale!

Demos,

at

Tremendous Savings!

New Cars & Trucks,

DEMOS

First come, first served!

Stock No. 894—75 Dodge Coronet

Custom 4-dr. sedan, 360, auto.,

p.s., p.b., air cond., AM-FM, ra-

dials, 2-tone, etc. Was \$5837.80.

NOW \$4735

Stock No. 926—75 Dodge D-100

Club Cab, 133-in. wheelbase, 318,

auto., p.s., p.b., AM, speed

control, radials, 2-tone, etc.



BOWLING NEWS



Women's Bowling Club

Standings as of Jan. 7

	W	L
Parish's Cleaners	52	24
Jiffy Mixes	51	25
Thompson's Plaza	49	27
Chelsea Milling	48	28
Palmer Ford	47 1/2	28 1/2
Washenaw Engineering	47 1/2	28 1/2
Norris Electric	43	33
Mark IV	37 1/2	38 1/2
Chelsea Grinding	37	39
Larry's Roadside Market	35 1/2	40 1/2
Klink Excavating	35 1/2	40 1/2
Niles Amway	35	41
Wolverine Bar	34 1/2	41 1/2
Lloyd Bridges	34	42
Rushing's Temp. Help	32	44
Norm's Barber Shop	28	50
Glenn's Mobil	20 1/2	59 1/2
Joe & Judy's	19	57

450 series and over: S. Klink, 588; J. Fitzsimmons, 535; P. Fitzsimmons, 530; E. Whitaker, 527; D. Judson, 526; J. Norris, 512; J. Hafner, 508; C. Bradbury, 506; P. Poertner, 497; B. Larson, 496; N. Packard, 493; R. Hummel, 481; M. E. Sutter, 472; K. McCalla, 470; D. Alber, 469; P. Wurster, 464; A. Alexander, 459; J. Rowe, 458; H. Morgan, 455; N. Kern, 454; A. Dowhal, 453; M. Kozminski, 450; B. Fritz, 450.

150 games and over: S. Klink, 190, 185, 214; J. Fitzsimmons, 174, 217; P. Fitzsimmons, 176, 183, 189; E. Whitaker, 204, 177; D. Judson, 181, 202; J. Norris, 158, 163, 191; J. Hafner, 178, 158, 172; C. Bradbury, 157, 172, 189; P. Poertner, 155, 170, 177; B. Larson, 152, 202, 142; N. Packard, 210, 155; R. Hummel, 167, 169; M. E. Sutter, 299; K. McCalla, 163, 165; D. Alber, 188; P. Wurster, 193; A. Alexander, 154, 164; J. Rowe, 185; H. Morgan, 158, 156; N. Kern, 150, 165; A. Dowhal, 183; M. Kozminski, 163, 162; B. Fritz, 153, 168; L. Hafner, 153; C. Powell, 168; S. Settle, 150; D. Sweet, 150; J. Fouty, 1520 R. Burkhardt, 172; R. Whitaker, 162; D. Alber, 161, 154; B. Bridges, 163; D. Fouty, 153, 168; L. Ortolowski, 153, 170; P. Devulder, 152; D. Coxzems, 162; R. Bush, 160; A. Fahrner, 174; V. Kelly, 164; Eder, 162; A. Boham, 159; G. Klink, 154.

Chelsea Suburban

Standings as of Jan. 7

	W	L
Waterloo Garage	50	53
Dancer's	48	55
Chelsea Drug	47	56
Dairy Queen	47	56
State Farm	47	56
Frisinger	46	58
Chelsea Assoc. Bldrs.	45	58
Fletcher Mobil	41	72
Mark IV Lounge	41	72
Dana Dee-Lites	41	72
Cavanaugh Lake Store	39	74
Chelsea Bank	38	75

150 games and over: N. Packard, 215, 169, 162; L. Cobb, 202; P. Elliott, 211, 188; N. Collins, 203, 189, 158; E. Figg, 169; H. Harrison, 178; F. Cole, 164; A. Coppemoll, 164; D. Keezer, 185; D. McAllister, 197, 178, 176; J. Buku, 171, 197; M. Imbody, 163, 189; V. Weber, 185, 176; J. Huston, 157, 150; G. DeSmith, 162; A. Bohne, 155, 170, 155; B. Beeman, 153; S. Ratz, 161, 153, 177; B. Mc Glibney, 162; V. Harvey, 153, 177, 158; V. Harvey, 157; B. Hafley, 181, 165; E. Fike, 157, 153; R. West, 156, 173; C. McGibney, 158; D. Keezer, 162; C. Peterson, 156; M. DeLaTorre, 171, 157; M. Bollinger, 154; T. Monroe, 185; L. Pearsall, 173; N. Prater, 187; C. Stoffer, 158, 163; D. Hawley, 174; S. Bowen, 153; E. Beck, 150; V. Stewart, 153, 152; M. Usher, 155.

425 series and over: D. McAllister, 551; N. Packard, 546; J. Buku, 508; N. Collins, 550; P. Elliott, 533; V. Weber, 489; M. Imbody, 479; A. Bohne, 480; D. Keezer, 460; E. Figg, 463; L. Cobb, 448; B. Beeman, 437; V. Harvey, 448; S. Ratzliff, 462; A. Hocking, 432; B. Hafley, 485; B. Fike, 458; R. West, 450; D. Keezer, 430; M. DeLaTorre, 485; N. Prater, 480; M. Bollinger, 434; B. Robeson, 425; C. Stoffer, 452; D. Hawley, 449; S. Bowen, 452; P. Harok, 464; V. Stewart, 428; M. Usher, 482.

Seven Point Mixed

Standings as of Jan. 7

	W	L
H. Hopes	38	45
ZAP	37	46
The Foxes	37	46
College Dodge	37	46
Fiat Ties	37	46
Strike Outs	37	46
River Rais	37	46
Dexter Gear	37	46
Elliott & Sons	37	46
Bowling Wizards	37	46
7 M Bar	37	46
Alley Runners	37	46

Men, 450 series and over: G. Beeman, 616; M. Spence, 604; F. Steers, 488; M. Fox, 472; R. Fox, 522; J. Fortner, 514; D. Carpenter, 450; F. Steers, 459; G. Imbody, 450; A. Hansen, 510; W. Teachworth, 498; E. Morris, 537.

Women, 425 series and over: C. Banke, 449; D. Beverie, 430; D. Norris, 452; V. Guenther, 456; C. Clapper, 433; S. Howell, 430; D. Hansen, 428; D. Dettling, 481.

Women, 150 games and over: C. Teachworth, 152; D. Hansen, 165; D. Dettling, 174; L. Martinez, 151; M. Imbody, 164; M. Paul, 166; S. Howell, 159; B. Rogers, 151; L. Fox, 167; J. Orbring, 163; V. Elliott, 165; J. Elliott, 167; A. Eder, 152; C. Behnke, 153, 153; D. Beverie, 158; P. Norris, 150; D. Norris, 162, 170; V. Guenther, 169; C. Klapperich, 159, 151.

Nite Owl League

Standings as of Jan. 12

	W	L
Sreele's Heating and Cooling	38	47
Southern Boy Take-Out	37	50
McCalla Feeds	32	44
Hanco Sports Center	31	52
Norm's Body Shop	31	52

Michigan Kitchen and Bathrooms, 77; 59; Bollinger's Sanitation, 74; 59; Chelsea Finance, 74; 59; VFW 4076, 69; 64; Associated Spring, 67; 68; Cavanaugh Lake Store, 67; 61; Walu's Oil, 62; 71; Ted's Standard, 62; 77; Limco Crafters No. 1, 53; 71; Belser's Construction, 50; 83; Limco Crafters No. 2, 47; 86; Limco Crafters No. 1, 47; 86; The Odd Team, 34; 89.

200 games and over: T. Schulze, 204; C. Staphis, 201; A. Peterson, 214; T. Crispin, 202; J. Hughes, 205; G. Ahrens, 204; D. Nice, Wicca, 201; W. Schulze, 215; K. McCalla, 208; J. Borders, 211; 500 series and over: D. Nice, 527; R. Readrick, 518; E. Platt, 508; W. Schulze, 519; K. McCalla, 531; R. Snyder, 519; S. Knapp, 519; F. Pelsch, 501; K. McCalla, 513; J. Borders, 530; D. Witke, 538; C. Staphis, 536; A. Peterson, 534; T. Schulze, 522; T. Crispin, 523; D. Henry, 537; J. Hughes, 534; D. Buku, 543; O. Hansen, 553; J. Dault, 576; G. Ahrens, 566.

Unknowns League

Standings as of Jan. 7

	W	L
The Streakers	47	47
Independents	71 1/2	54 1/2
The Strikers	70	58
Namesless Five	67	60
Banana Splits	61	75
Fascinating "5"	49 1/2	76 1/2

425 series and over: K. Clark, 432; R. Beeman, 428; S. Steele, 459; K. Greenleaf, 435; P. Rowton, 473; J. Murphy, 439; C. Salyer, 427; J. Fitzsimmons, 487.

140 games and over: C. Salyer, 137; D. Weiss, 144; J. Fitzsimmons, 182, 169; D. Scott, 146; C. Fleisch, 182, 144; P. Rowton, 163, 174; B. Check, 151; J. Mosier, 174; J. Murphy, 166, 151; K. Clark, 169; R. Beeman, 158; M. Adams, 147; C. Risher, 147; S. Steele, 151, 18; K. Greenleaf, 149, 150.

Charlie Brown Prep

Standings as of Jan. 10

	W	L
Dile Pickles	23	11
Village Motor Strikers	23	10
Billups	21	13
The Monkey's	20	14
Super Strikers	18	16
Pin Crackers	18	16
Unbeatables	18	16
Fantastic Five	17	17
Pin Sweepers	18	18
Rolling Stones	12	22
All Stars	8	26
Purple Stars	8	26

Girls, high games: D. Thompson, 131; T. Schulze, 121; L. Koszegi, 118; M. Petsch, 115; L. Mep-Jans, 108.

Boys, high games: D. Alber, 204; C. Tobin, 162; J. Dils, 149, 145; B. McAllister, 148; A. Fletcher, 146.

Tri-City Mixed

Standings as of Jan. 9

	W	L
Stivers	35	48
Freelin, Craft & Co.	30	53
M & M	28	58
Fletcher & Baker	27	59
3-D Sales & Service	27	60
The Proud Americans	21	62
Palmer's Union 78	20	63
V.F.S.	18	65
Burnett & Devine	16	68
Mel's Roofing	14	69
Portage Hardware	14	69
E. P. Smith Pallet Co.	13	70
Chelsea Cleaners	12	71
Smith's Service	10	73
Real Estate One	8	77
Bable & Bable	5	79
McEwan & Mock	5	80
Little Rooster	5	82

500 series, men: J. Baker, 502; K. Barksdale, 503; G. Burnett, 503; H. Burnett, 517; R. Burns, 521; S. Cavender, 509; C. Dettling, 537; R. Harms, 562; J. Lyerla, 515; P. Maier, 526; M. Ritchie, 525; J. Shadley, 521; M. Smith, 549; J. Tindal, 518; D. Westcott, 548.

200 games, men: K. Barksdale, 201; C. Dettling, 205; J. Lyerla, 218; J. Tindal, 202.

450 series, women: B. Fike, 455; J. Harms, 458; A. Hocking, 455; C. Hodges, 468; C. Scherer, 471; C. Stoffer, 451; E. Tindal, 552.

150 games, women: M. Ashmore, 158; J. Burnett, 160; G. Cooper, 170; J. Collins, 157; G. Dettling, 162; B. Fike, 172, 161; J. Harms, 182; A. Hocking, 153, 169; C. Hodges, 159, 157, 152; B. Parish, 153; G. Ritchie, 160; C. Scherer, 165, 160; C. Shadley, 151; C. Stoffer, 160, 152; E. Tindal, 200, 209; D. Watkins, 154, M. Westcott, 174; D. Worden, 168.

Peppermint Patties

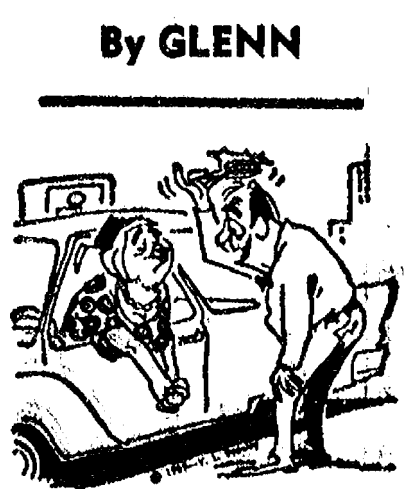
Standings as of Jan. 10

	W	L
The Pros	28 1/2	19 1/2
Red Barons	28	20
Blue Streaks	26 1/2	21 1/2
Super Stars	13	35

Games 70 and over: K. Centilli, 81, 78; T. Mindykowski, 116, 101; T. Harok, 74; G. Greenleaf, 99, 105; M. White, 102; T. Loucks, 82, 80; D. Waldyke, 87; K. Shepherd, 84, 94; S. Baker, 70; D. Rowe, 119, 99.

Mobil-Toons

By GLENN

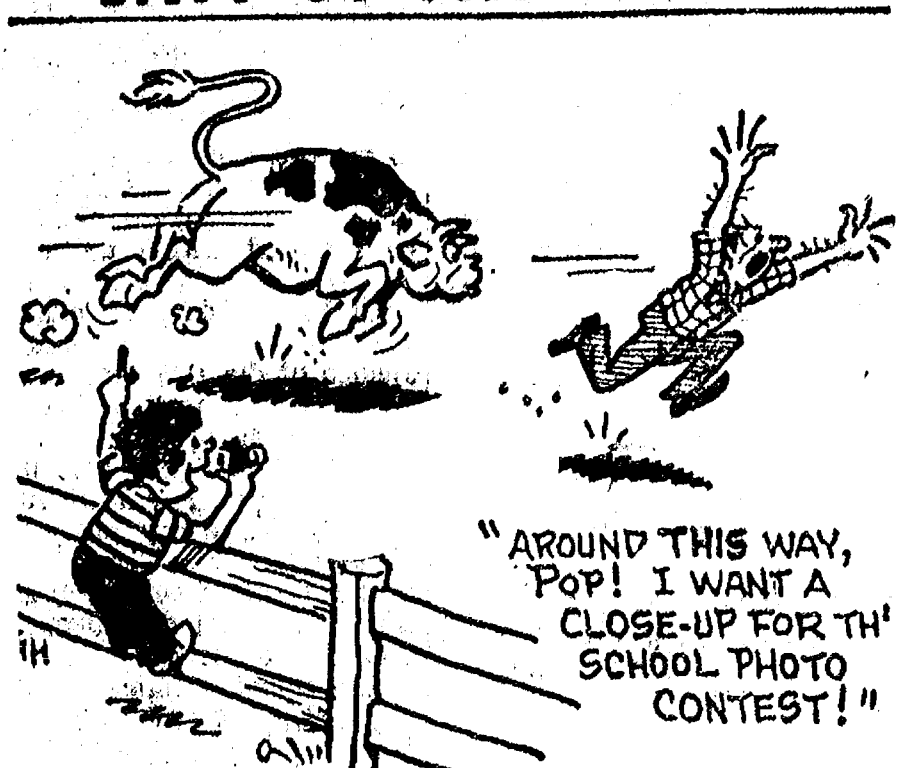


"No ma'am... I'd rather have the money than the kias... I have to pass it on to the boys!"

Make trading here a habit!

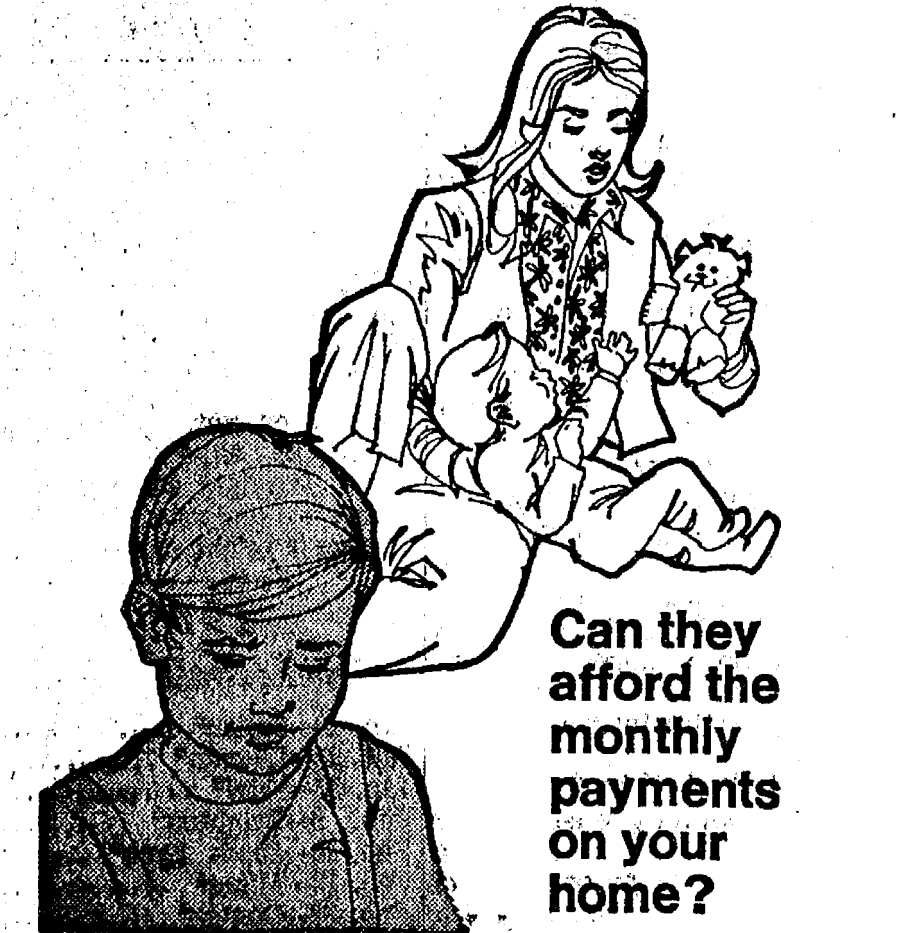
GLENN'S MOBIL SERVICE
1622 M-52 & I-94
CHELSEA, MICHIGAN
Phone 475-1767
GLENN HEIM PROP.

LAFF OF THE WEEK



"AROUND THIS WAY, POP! I WANT A CLOSE-UP FOR TH' SCHOOL PHOTO CONTEST!"

CUSTOM BUMPING and PAINTING
FREE ESTIMATES - ALL MAKES
Get the Best for Less!
FRANK GROHS CHEVROLET
Phone 426-4677 Dexter, Mich.



Can they afford the monthly payments on your home?

Suppose your wife had to do it on her own. Chances are she couldn't afford those monthly payments and preserve your estate as well. Unless, of course, you plan for it now—with our "altogether" mortgage insurance. Because it has a fixed term and covers only the amount of your mortgage, it won't cost as much as you might think. Give us a call now. You don't have to buy a new house to be eligible. You're eligible anytime. Altogether Insurance—to help the family stay all together.

it's better
altogether

Donald Spector Named To Dean's Honor List At Eastern Michigan

Donald Spector, of 200 Cedar Lake, was recently named to the Dean's List at Eastern Michigan University for studies completed in the fall term. Spector, who is a junior at EMU majoring in social studies and working toward a secondary education certificate, was also initiated into Cappa Delta Phi fraternity at the end of the fall term.

Spector lives with his wife, Cheryl and is employed with the Chelsea Post Office.

Auto-Owners Life Insurance Company

A. D. MAYER AGENCY, INC.
115 PARK ST., CHELSEA
BOB BARLOW, AGENT
PHONE 475-2030

There's No Substitute for Protein in a Hog Ration

Protein builds meaty hogs and puts weight on fast. Protein-deprived hogs take longer to reach market weight and time is money. Don't waste corn. Balance it with Wayne 40% Pig Balancer and make the best possible use of facilities, time, grain and your investment. It's ideal for pigs from 60 to 125 lbs.

Eat More Pork

McCALLA FEED SERVICE
12875 Old US-12
PHONE 475-8153

MARK IV LOUNGE

Now Featuring

SUN DANCE

KIM and LINDA

Easy Listening

SATURDAY NIGHTS - 9 p.m. to 1 a.m.

NOW INSTALLED

And Ready for your use

BRUNSWICK AUTOMATIC SCORING

OPEN HOURS:

Sunday	12 Noon to 11 p.m.
Monday	10 a.m. to 1 a.m.
Tuesday	9 a.m. to 1 a.m.
Wednesday	10 a.m. to 1 a.m.
Thursday	10 a.m. to 1 a.m.
Friday	10 a.m. to 1 a.m.
Saturday	9 a.m. to 1 a.m.

ENJOY LIFE - BOWL!

Bring the family bowling this week-end

CHELSEA LANES, Inc.
1180 M-52 CHELSEA
PHONE 475-8141

Leisure Time League

Standings as of Jan. 8

	W	L
Unpredictables	38	26
Rug Rats	38	26
Misfits	38	26
Sugar Loafers	38	26
Four Strooges	35 1/2	28 1/2
Slowpokes	32 1/2	31 1/2
Crackpots	30	34
Highly Hopefuls	30	34
The Lakers	28 1/2	35 1/2
Roadrunners	27	37
Holy Rollers	27	37
Lady Bugs	23 1/2	40 1/2

500 series: V. Wheaton, 541; 200 games: V. Wheaton, 208; 100 series: M. Shears, 421; E. Williams, 425; D. Dault, 428; C. Satterthwaite, 461; J. Anderson, 404; C. Engler, 417; C. Hoffman, 470; S. Weber, 408; B. Tison, 430; D. Thompson, 408; S. Friday, 400; S. Centilli, 400; D. Hafner, 432; M. O'Donnell, 426; J. Staphis, 456; S. Brown, 448.

140 games: M. Shears, 145, 140; E. Williams, 159, 153; D. Dault, 147, 167, 444; C. Satterthwaite, 158, 155, 148; A. Vanderwaard, 146; J. Anderson, 153, 152; C. Engler, 157; P. Weigand, 148; C. Hoffman, 159, 173; S. Weber, 143; B. Tison, 172; D. Thompson, 151; S. Friday, 144; V. Wheaton, 187, 146; G. Tallman, 145; S. Centilli, 149, 143; D. Hafner, 144, 163; R. Musbach, 155; E. Swanson, 147; C.

Junior House League

Standings as of Jan. 8

	W	L
Jim Bradley Pontiac	82	44
Mac Tools	77	49
Smith's Service	77	49
Chelsea Lanes	75	51
3-D Sales & Service	74	52
Boyer Automotive	69	57
Mark IV Lounge	68	58
Yael Asphalt Paving	67	59
Dana Maintenance	67	59
Dana Demos	63	63
Secum Construction	61	65
Washtenaw Engineering	60	66
Fearless Five	57	69
Rockwell Intl. No. 1	56	70
Delf's Paints	52	74
Wolverine Bar	49	77
Ann Arbor Kirby	45	81
Rockwell Intl. No. 2	34	92

600 series: J. Harok, 600.

525 or over: J. Borders, 535; G. Weir, 558; D. Buku, 526; N. Fahrner, 558; D. Allen, 569; L. Salyer, 529; W. Beeman, 541; P. Kelly, 524; A. Sannes, 526; G. Beeman, 532; B. Smith, 587; J. Risner, 576; S. Glazier, 564; D. White, 583; F. Northrop, 543; K. Norris, 532; D. Bush, 549; H. Pennington, 535; R. Ringe, 534; A. Fleischmann, 568; K. Larson, 525; J. Torrice, 527; O. cavender, 525; M. Smith, 556.

CHELSEA GLASS WORKS

WORKMANSHIP AND MATERIALS FULLY GUARANTEED.

Open Daily 8 a.m. to 5 p.m.; Sat., 8 a.m. to 1 p.m.

140 W. Middle, Chelsea Phone (313) 475-8667

WE REPAIR AND REPLACE:

- ★ STORE FRONTS
 - ★ FURNITURE TOPS
 - ★ SHOWER DOORS
 - ★ THERMOPANES
 - ★ AUTO GLASS - Including Windshields
 - ★ MIRRORS
 - ★ PATIO DOORS
 - ★ TUB ENCLOSURES
- Free Pick-up and delivery on auto work.
- Storm Door & Window Reglazing & Screens**
COMMERCIAL BUILDINGS OR RESIDENTIAL
PROMPT SERVICE REASONABLE PRICES

Letters to the Editor

Dear Editor:

Enclosed please find a copy of a letter that I have written to the Village Council. I have also enclosed a copy of the ordinance that I have quoted.

It is my hope that perhaps in this way a bad situation can be brought to the attention of everyone and be corrected.

Village Council
Village Offices
Chelsea, Mich. 48118
Gentlemen:

I remember reading last summer that you as a Council were very concerned with the fact that children had to walk to school in streets where there were no sidewalks. Where is your concern now with walks around town so snow and ice covered that children and adults have to take to the street?

Walking to work is something I enjoy . . . or at least I do when it is possible to safely do so on a sidewalk. Since the snowfall of Dec. 26, I have hesitated to risk life and limb by doing so. I have a choice—try to walk through snow and hope that I don't hit a patch of ice under it and fall, or walk in the street and perhaps fall in the path of a car.

Chelsea has an ordinance about snow removal. Let's have it enforced. The snow fell Dec. 26 and I think two weeks later with no effort being made for removal from sidewalks should at least mean the property owner has no intention of making an effort.

Following is the ordinance. If you think it's a little outdated, then let's get a new one, but let's DO SOMETHING! I know that there are others that like to or have to walk. There are also handicapped persons that should not have an additional burden placed on them by not having walks cleared. Let's not be apathetic, let's be considerate of others.

ORDINANCE NO. 8
VILLAGE OF CHELSEA

Section 3. It shall be the duty of the owner or occupant to remove all obstructions caused by snow and ice from the sidewalks in front of the premises owned or occupied by them within two hours after verbal notice by the marshal so to do.

Section 4. It shall be the duty of the marshal within two hours after any snow storm shall cease to notify every owner or occupant of any premises in front of which there are sidewalks constructed that he is required to remove such obstructions caused by snow or ice within two hours after the time of notice and in case any person so notified whose duty it shall be

to remove such obstructions shall neglect or refuse to remove such obstructions or cause the same to be removed within the time required by such notice, then it shall be the duty of marshal to forthwith make complaint to a Justice of the Peace of competent jurisdiction against any and every person violating section 3 of this ordinance, and shall also immediately notify the Village Attorney of any and every complaint so made, and it shall be the duty of said attorney to prosecute all such complaints with diligence.

Section 5. It shall be the duty of the marshal immediately after the making of any such complaint to proceed forthwith to remove said obstructions caused by ice or snow, or cause the same to be removed without delay, and at the next meeting of the council thereafter to report any and all complaints so made, and any and all obstructions so removed with the names of the owners of the premises in front of which obstructions were removed, together with cost of the same, verified by oath of said marshal, and the description of the property in front of which such obstructions were removed.

I personally believe the time quoted in the above ordinance is not realistic, but believe that within 24 hours would be a fair request.

Sincerely,
Agnes E. Boylan
(Mrs. Keith L.)

Heave That Snow

(Continued from page seven)

snow and ice from the sidewalks in front of the premises owned or occupied by them within two hours . . . Meranuck has asked village attorney Peter Flintoft to look into the legality of this matter.

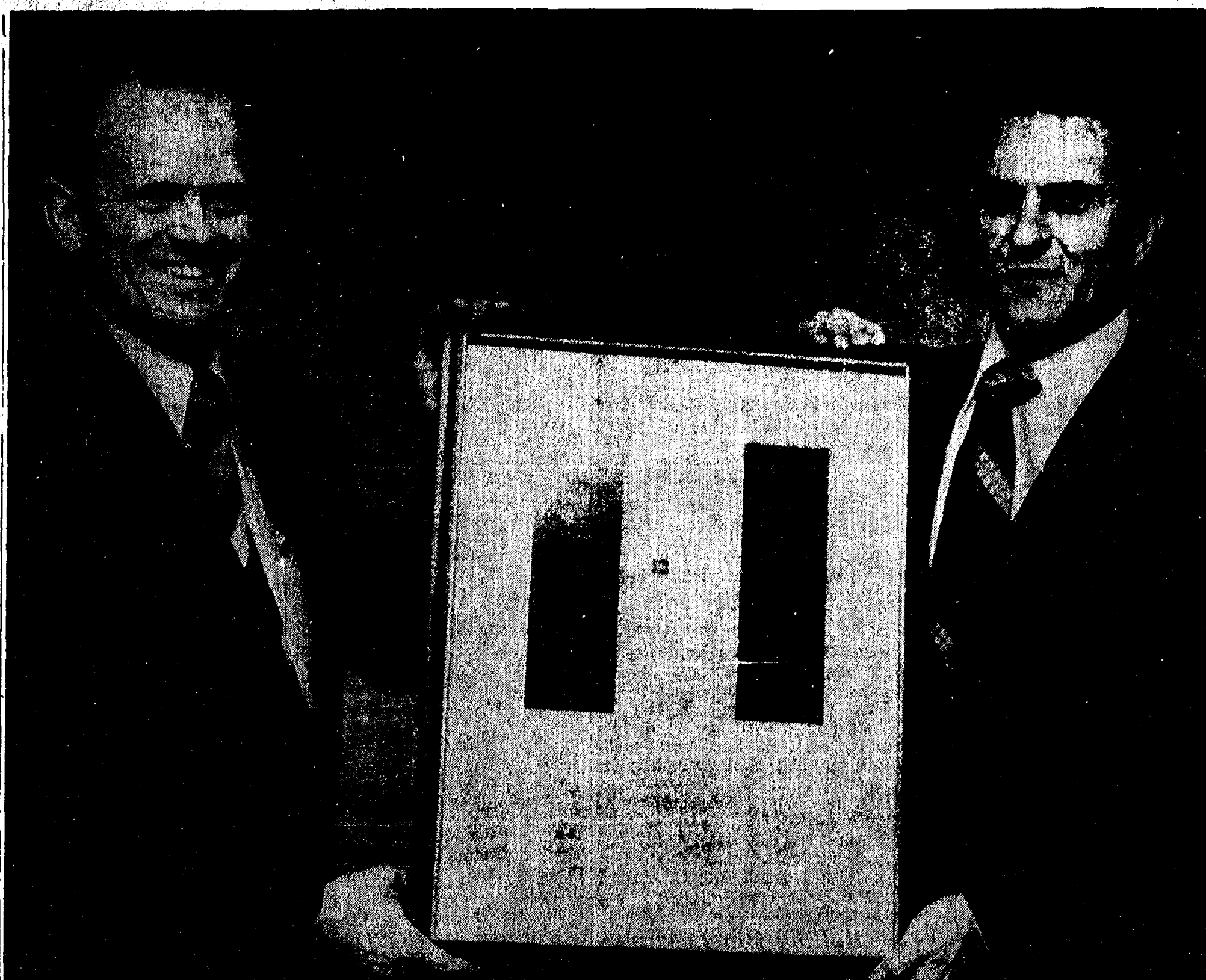
Legal or not, village residents might be wise to shovel their snow. It might save accident and injury to someone else. And who knows, it might save them too!

1975-76

Basketball Schedule

Jan. 16—Saline*away
Jan. 23—Lincoln*home
Jan. 30—Novi*away
Feb. 6—Brighton*away
Feb. 10—South Lyon*home
Feb. 13—Milan*away
Feb. 20—Dexter*home
Feb. 27—Saline*home

*League games.
All home basketball games begin at 8:30 p.m. in the gymnasium for the junior varsity team and approximately 8 p.m. for the varsity.



DISTINGUISHED DEALER: George Palmer, left, of Palmer Motor Sales, accepts the Ford Division Distinguished Achievement Award from J. Carver Wood, Jr., Ford Division's Detroit district sales manager. The national award honors Ford dealers who have

consistently maintained superior facilities, service and salesmanship. The presentation was made at a recent awards luncheon in Dearborn.

Social Security Benefits Increase in Past Year

A record \$2,866 million was paid out in social security cash benefits to residents of Michigan in calendar year 1975, according to Robert A. Kehoe, social security district manager in Ann Arbor. This was an increase of \$340 million over the total paid out in 1974.

An 8 percent benefit increase effective June, 1975, an increased number of people on the social security rolls, and benefits payable based on high-average earnings, all contributed to the increased payments.

Of the social security benefits paid to beneficiaries in Michigan during 1975, \$1.74 million went to retired workers and their dependents and \$714 million to the survivors of workers who have died. Another \$388 million was paid to severely disabled workers and their dependents.

Nationally, social security cash benefit payments in 1975 totaled \$7 billion. This was about \$3.4 billion higher than in the previous year.

At the end of December, 1975,

Parents of Special Ed Children Discuss Problems

Fourteen parents of children in special education classes in the Manchester and Chelsea school systems met for the first time Dec. 10 to discuss problems and exchange suggestions concerning their special children and their special curriculum in the schools.

After this first meeting, during which the group discussed the mentally impaired and learning disabled child, the child with speech and hearing difficulties and the physically handicapped child, a decision was made to meet on the third Tuesday of every month. Meetings will be held in room 204 at Chelsea High school at 7 p.m.

According to Gladys Buck who chairs the parents group, suggestions were made on what professional to see about a specific problem and ideas discussed for future meetings. Future plans include having each teacher present his or her programs (teachers were not present at this first meeting), encourage professionals such as social workers, director of special education, psychologists and Washtenaw Intermediate School District workers attend the meetings and explain what they are doing for special education students and how parents might help.

All parents of children in special education are encouraged to attend the next meeting scheduled for Jan. 20.

Hills for tobogganing, sledding and cross-country skiing, plus ice skating rinks and ice fishing are major winter sports at Stony Creek Metropark near Utica. For details phone 781-4242 (Washington).

**FARLEY
CONSTRUCTION**
522 HOWARD RD.

ADDITIONS - REMODELING
CONCRETE WORK
REPAIRS

475-8265 or 475-7643

NOMINATION FORM

for
JAYCEE

DISTINGUISHED SERVICE AWARD

The Jaycee Distinguished Service Award is now open to any age, man or woman, who has given service to this community. We would greatly appreciate all nominations for this award. The nomination may be made by an individual or a group.

Please send nomination form to Chelsea Jaycees, P. O. Box 277, DSA Awards Chairman, Chelsea, Mich. 48118.

I Nominate _____ (name)

of _____ (address) for the Chelsea

Jaycee's Distinguished Service Award.

Signed _____

Phone No. _____

A Standard Want Ad Gets Results!

NOTICE

The Annual Meeting of Members of the
CHELSEA UNITED WAY
Will Be Held

Wednesday, January 21, 1976

at 7:30 p.m. in the Second Floor Council Room
of the Municipal Building, Chelsea, Mich.

Business of this meeting will include:

- ★ ELECTION OF 7 DIRECTORS
- ★ PRESENTATION OF THE ANNUAL REPORTS
- and any other business that may come before the meeting.

Everyone who made a contribution during the 1975 campaign for funds is considered a member eligible to vote and is urged to attend.

EARL KLEMER, President
MRS. DON WOOD, Secretary

Enjoy Life . . .
Eat Out
**TUESDAY
NIGHT**
at
**The Captains
Table**

**DEEP-FRIED
CHICKEN \$2.75**
All You Can Eat!

Included with the meal — French Fries, choice of Salad, and Buttermilk Biscuits with Butter and Honey.

**The
Captains Table**

8093 Main St., Dexter 426-3811

Monday, Wednesday, 6 a.m. to 9 p.m.

Thursday and Friday, 6 a.m. to 10 p.m.

Saturday, 7 a.m. to 9 p.m.

Closed Sundays

**21ST Magnavox
ANNUAL
SALE**

LIMITED
TIME
ONLY!
ENDS
FEB. 23rd
1976

SAVE

HEYDLAUFF'S

113 N. MAIN ST.

Phone 475-1221



Polly's MASTER
MARKETS

1101 M-52

CHELSEA, MICH.

(Corner M-52 and Old U.S. 12)

Supplement for Ann Arbor News, Chelsea Standard

get to know us...
WE CAN HELP YOU SAVE ON YOUR FOOD BILL!

OPEN . 8 A.M. TO 10 P.M.
DAILY.

OPEN 9 A.M. TO 6 P.M.
SUNDAY:

- ★ **QUALITY PRODUCE**
- ★ **QUALITY MEAT**
- ★ **COLD BEER & WINE**
- ★ **LOTTERY TICKETS**
- ★ **SIDES OF BEEF**
- ★ **FRUIT BASKETS**
- ★ **DRY CLEANING**
- ★ **PHOTO PROCESSING**
- ★ **VARIETY AT LOW PRICES**

1976 WE'RE ONLY JUST BEGINNING



Polly's MASTER MARKETS
1101 M-52
CHELSEA, MICH.
(Corner M-52 and Old U.S. 12)

SPRING ARBOR RD. STORE OPEN 24 HOURS
All Other Stores
Daily 8 to 10 Sunday 9 to 9



LAMB SPECIALS

Loin-cut	Lb.	\$2.09
Rib-cut	Lb.	\$1.99
Sirloin	Lb.	\$1.79
Rump Half	Lb.	\$1.59
Shank Half	Lb.	\$1.69
Blade	Lb.	\$1.19
Arm-Cut	Lb.	\$1.39
Fresh	Lb.	\$1.09
Bone-In	Lb.	99¢
Fresh	Lb.	\$1.79
Fresh	Lb.	99¢

Whole
LEG of LAMB
Lb. \$1.59

LAMB STEAK
Lb. \$1.79

Scot Pride Sliced
BACON
Lb. **99¢**

SAVE 30¢ WITH IN-STORE COUPON

Farmer Peet Sliced
LUNCH MEAT
Lb. **99¢**

SAVE 40¢ WITH IN-STORE COUPON

Polly Pride Quality
HAMBURG
10-Lb. Bag **\$6.90**

SAVE \$1.00 WITH IN-STORE COUPON

Pork Roast

Loin-Half Lb. **\$1.69**

Pork Roast

Rib-Half Lb. **\$1.59**

Pork Chops

Stuffed Lb. **\$1.69**

PORK SPECIALS



Herrud Hickory Host
CORNERED BEEF BRISKET

Lb. **89¢**

Government Inspected Whole
CHICKEN LEGS
Lb. **69¢**

Government Inspected
CHICKEN THIGHS
Lb. **69¢**

Government Inspected
CHICKEN BREAST
Lb. **99¢**

Greenwich
CORNISH HENS
Ea. **99¢**

Foulds
• ELBOW MACARONI
• LONG THIN SPAGHETTI
• SEA SHELLS
5 7-OZ. PKGS. **\$1**

Peter Paul
• ALMOND JOY
• POWERHOUSE
• CARAVELLE
• MOUNDS
• YORK MINTS
6-Paks **69¢**

Polly's Grade A
EXTRA LARGE EGGS Dozen **69¢** With In-Store Coupon

Polly Pride Quality	Lb.	\$1.49
CUBE STEAK	Lb.	\$1.19
Polly Pride Quality Boneless	Lb.	89¢
STEW BEEF	Lb.	\$1.09
Polly Pride Quality Beef	Lb.	
GROUND CHUCK	Lb.	
Eckrich Regular or Beef	Lb.	
FUN FRANKS	Lb.	

Eckrich Sliced	Lb.	\$1.29
BOLOGNA	Lb.	\$1.39
Eckrich Fresh Pork	Lb.	69¢
ROLL SAUSAGE	Lb.	\$1.19
Herrud Chunk	Lb.	
BRAUNSWEIGER	Lb.	
Herrud Polish or	14-oz. pkg.	
SMOKED SAUSAGE	14-oz. pkg.	

Farmer Peet Sliced	12-oz.	\$1.19
BACON	Lb.	\$1.09
Farmer Peet V.C.	Lb.	59¢
SAUSAGE PATTIES	Lb.	89¢
Breaded	Lb.	
FISH PORTIONS	Lb.	
Fresh	Lb.	
TURBOT FILLETS	Lb.	

Garden Fresh

PRODUCE

Sno-White
MUSHROOMS
Lb. **79¢**

Garden Fresh	2-Lb. Bag	37¢
CARROTS	Bunch	29¢
ENDIVE	Bunch	29¢
ESCAROLE	Bunch	29¢
ROMAINE	Bunch	29¢
U.S. No. 1 Michigan	3-Lb. Bag	49¢
McINTOSH APPLES	WITH IN-STORE COUPON	

Florida 125 size
TEMPLE ORANGES
Dozen **59¢**

TO SAVE YOU MORE TOTAL FOOD BILL



Polly's MASTER MARKETS
1101 M-52
CHELSEA, MICH.
(Corner M-52 and Old U.S. 12)

Hi-Dri Heavy Duty Paper
TOWELS 39¢
Jumbo Roll

Glad
TRASH BAGS 99¢
10-ct.

Sealtest Light n' Lively
YOGURT 89¢
3 8-oz.

SAVE UP TO 40¢ WITH IN-STORE COUPON

Dairy Fresh
MARGARINE 29¢
1-Lb. Quarters

Frigo Chunk
MOZARELLA \$1.29
1-Lb.

SAVE UP TO 40¢ WITH IN-STORE COUPON

SAVE UP TO \$1.20 WITH IN-STORE COUPON

SAVE \$1.00 WITH IN-STORE COUPON

Wisk DETERGENT \$3.99
Gallon

MUSSELMAN'S APPLE SAUCE 39¢
25 oz.

SAVE UP TO 32¢ WITH IN-STORE COUPON

QUICK 'N' EASY
Frozen Foods

Ore-Ida
FRENCH FRIES 69¢
32-oz.

SAVE, SAVE, SAVE
ON PRIVATE LABEL BRANDS

Scot Lad	FRUIT DRINKS	46-oz.	39¢
Scot Lad	Meatballs & SPAGHETTI	15-Oz.	39¢
Scot Lad	MEAT RAVIOLI	15-Oz.	39¢
Scot Lad	CHILI w/BEANS	15-Oz.	45¢
Scot Lad	POTATOES	3 16-oz. can	69¢
Scot Lad	GREEN BEANS	3 29-oz. can	\$1
Scot Lad	TURNIP GREENS	5 16-oz. can	\$1
Scot Lad	SPINACH	5 16-oz. can	\$1

NEW
bounce FABRIC SOFTENER
It works in the DRYER!

HEINZ TOMATO KETCHUP

IVORY BEAUTY BUNDLE

FABRIC SOFTENER \$1.39
40-ct.

GRAPE JAM 89¢
2-Lb.

TOMATO JUICE 49¢
46-oz.

SWEET 10 79¢
6-oz.

DOG FOOD \$1.99
72-oz.

RAISIN BREAD 59¢
16-oz.

HEINZ CATSUP 77¢
38-oz.

TACO SHELLS 39¢
10-ct.

TACO KIT 69¢
7-oz.

TACO MIX 29¢
13-oz.

TACO SAUCE 56¢
6-oz.

DOG FOOD \$3.29
25-Lb.

IVORY SOAP 49¢
4-Pak

Rich's COFFEE RICH 44¢
32-Oz.

Morton's Country Table DINNERS 69¢
19-Oz.

Everyday Low Prices!

Scot Lad	ORANGE JUICE	6-oz.	24¢
Awake	ORANGE DRINK	12-Oz.	45¢
Queen of Scot	CUT CORN	3 10-oz.	\$1
Queen of Scot	GREEN BEANS	3 9-oz.	\$1
Birds Eye	COOL WHIP	9-oz.	65¢
Swanson Hungry Man	DINNERS		\$1.37
Banquet	POT PIES	8-oz.	27¢
Queen of Scot	MIXED VEGETABLES	3 10-oz.	\$1

Save UP TO \$1.24
WITH THESE BONUS COUPONS and POLLY'S IN-STORE COUPONS

Snack Bar SPECIALS!

Monday - Veg. Soup, Ham Salad - 99¢

Tuesday - Spaghetti, Cole Slaw, garlic toast - \$1.09

Wednesday - Meat Loaf, Cole Slaw, Mashed Potatoes - \$1.29

Thursday - Broasted Chicken, Cole Slaw, MASHED Potatoes - \$1.29

Friday - Fish Sandwich, French Fries, Cole Slaw - 99¢

Saturday - Sloppy Joes, French Fries, Cole Slaw - 99¢

Snack Bar Located at Polly's on Spring Arbor Rd.

8-Pak TAB or COKE \$1.19
16 oz. N.R.'s WITH COUPON

Pillsbury BEST FLOUR 69¢
5-Lb. WITH COUPON

Maxwell House COFFEE \$2.49
2-Lb. WITH COUPON

Minute Maid ORANGE JUICE 2 \$1
12 Oz. WITH COUPON

VALUABLE COUPON
SAVE UP TO 1.32
8-Pak TAB or COKE 16-oz. N.R.'s \$1.19
LIMIT 2 PER COUPON PER FAMILY GOOD THRU 1-18-76

VALUABLE COUPON
SAVE 20¢
Pillsbury FLOUR 5-Lb. Bag 69¢
LIMIT 1 PER COUPON PER FAMILY GOOD THRU 1-18-76

VALUABLE COUPON
SAVE 28¢
Maxwell House COFFEE 2-Lb. \$2.49
LIMIT 1 PER COUPON PER FAMILY GOOD THRU 1-18-76

VALUABLE COUPON
SAVE 30¢
Minute Maid ORANGE JUICE 12-oz. cans \$1
LIMIT 2 PER COUPON PER FAMILY GOOD THRU 1-18-76

Bakery Delights
FRESHLY BAKED!

BLUEBERRY PIES	8-Inch	98¢
CINNAMON ROLLS	6-Pak	59¢
CHOCOLATE CHIP COOKIES	Dozen	79¢
HOMESTYLE BREAD	1-Lb.	49¢

Thank You

FOR SHOPPING AT...



WHERE WE ARE
HAPPY TO.....

save YOU MONEY!